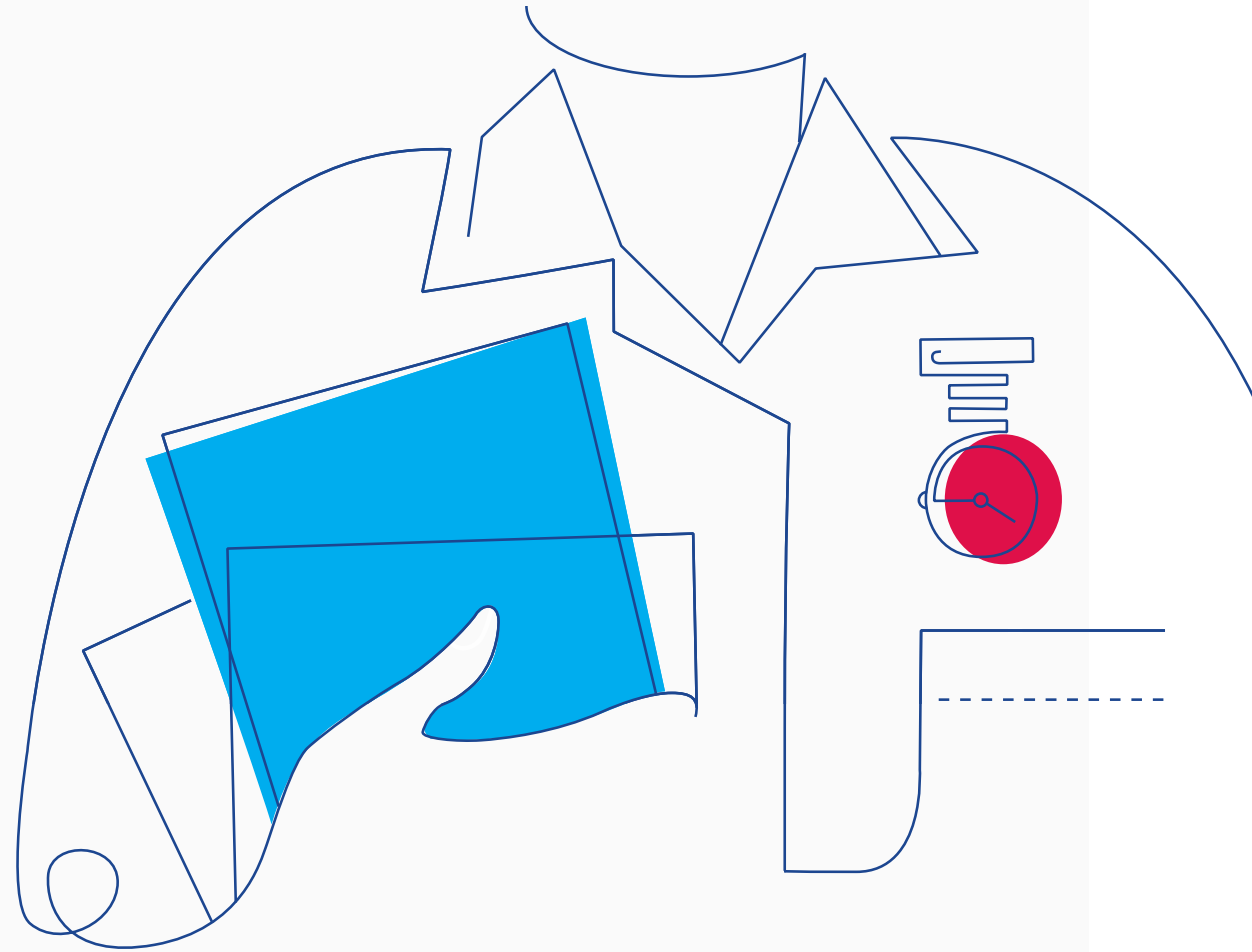




**The world's largest  
nursing-specific  
trade union and  
professional body**

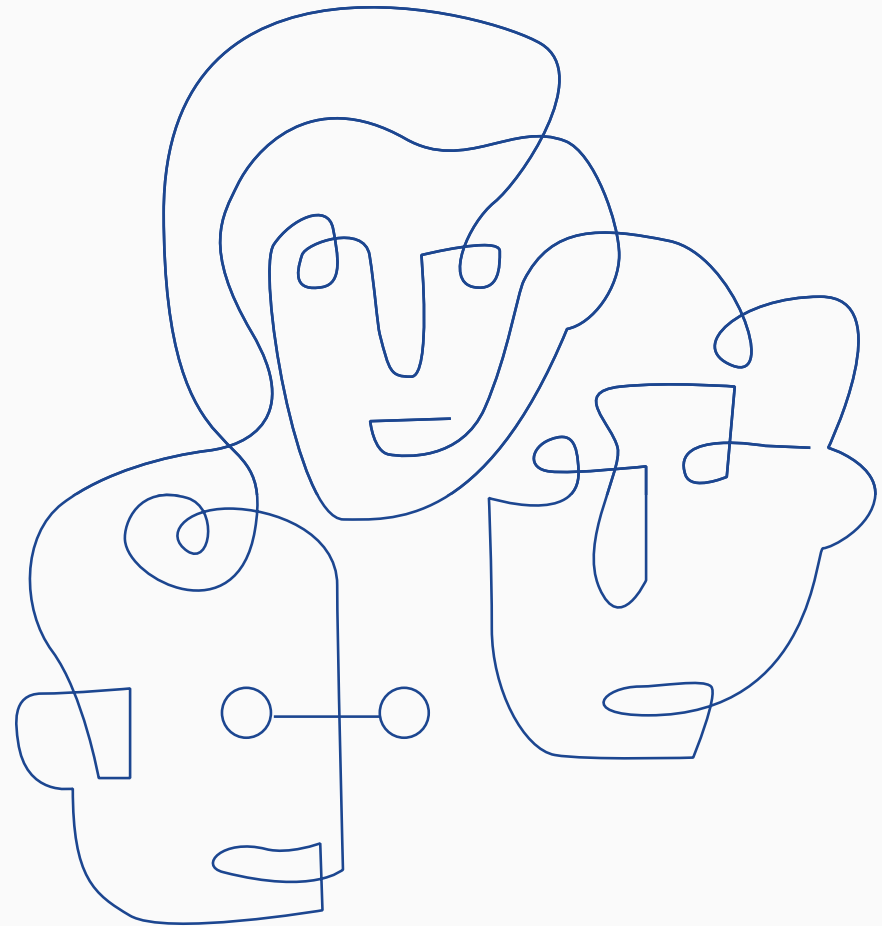


# #RCN100

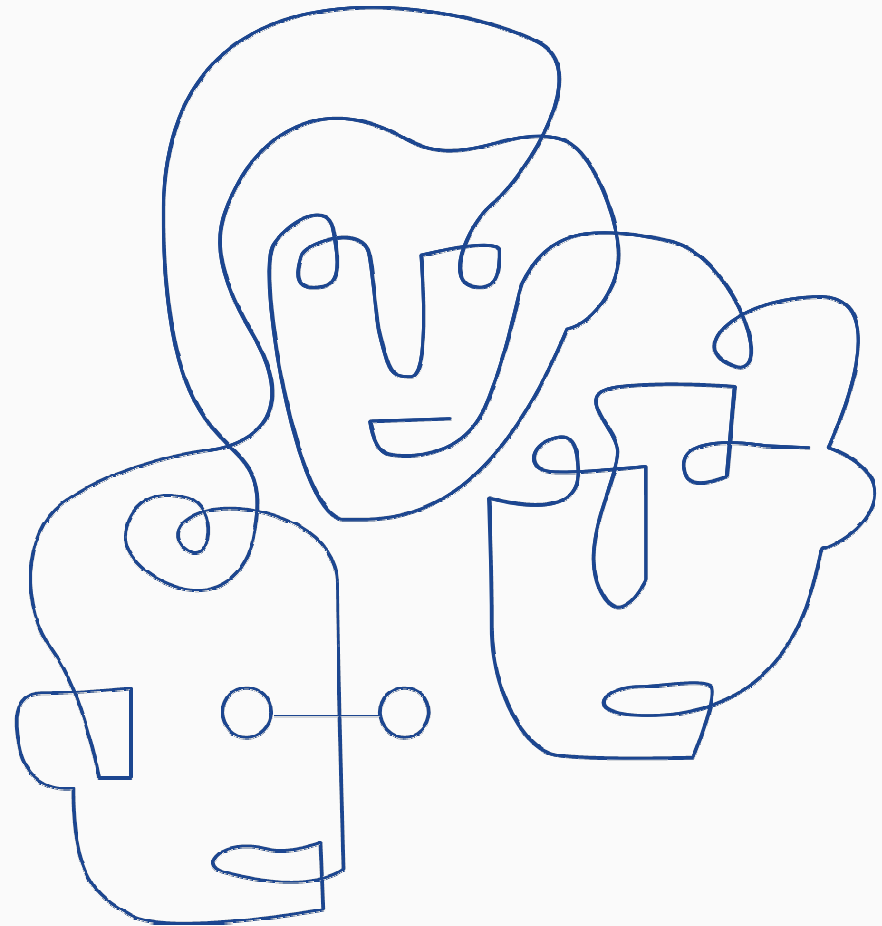


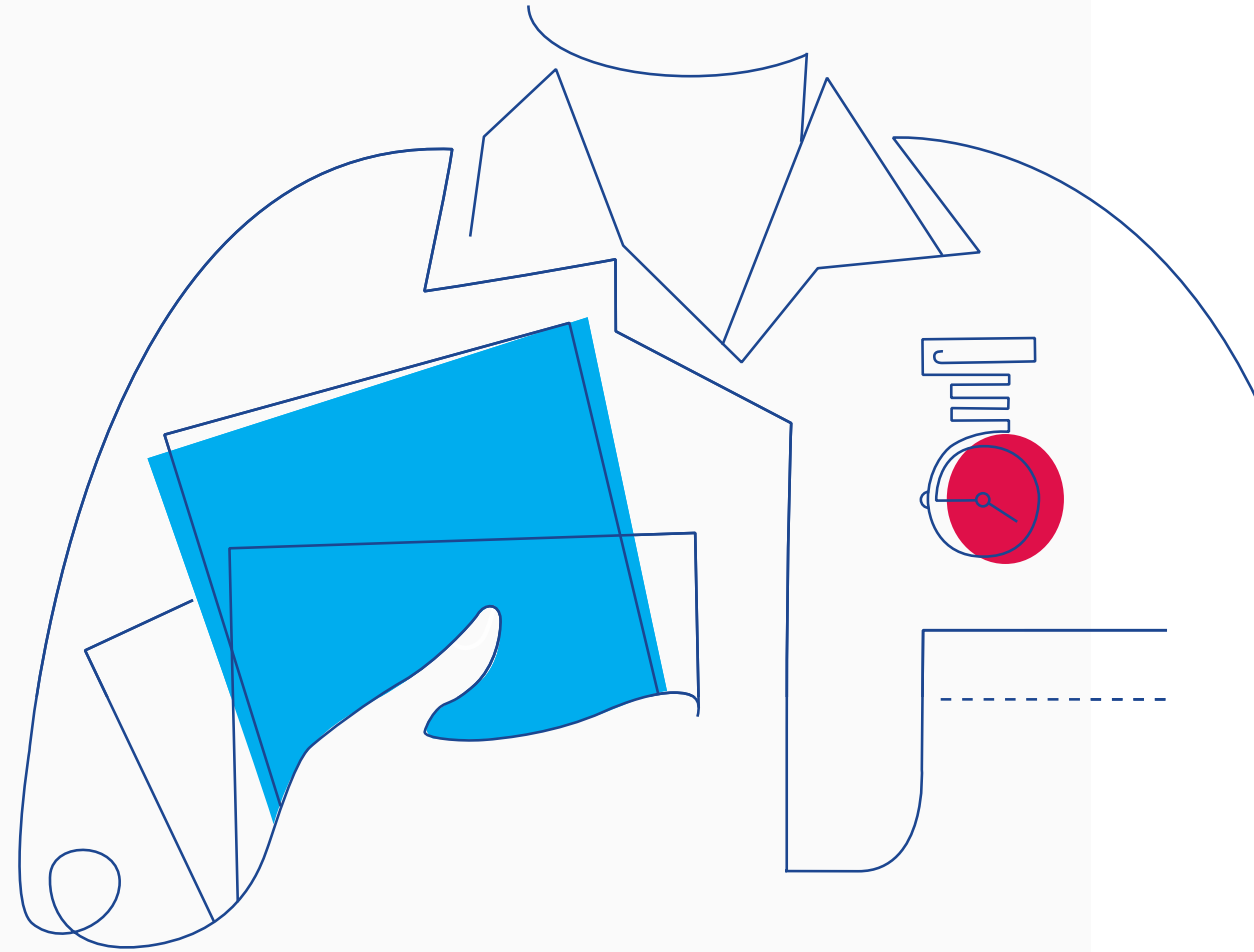
# Celebrating 100 years of the Royal College of Nursing.

**Over 435,000  
members,  
including 38,000  
student nurses  
and midwives.**



**With 2 out of 3  
nurses being  
members of the RCN,  
we have a strong  
voice in the  
workplace.**





**We are the voice of  
nursing in the UK**

## What it feels like to be a nurse in 2016

Around 1/2 feel worse off than 5 years ago

- 30% have struggled to pay gas & electricity bills
- 14 per cent have missed meals because of financial difficulties
- 53 per cent have worked extra hours to earn money
- 32 per cent have worked nights/weekend shifts to help pay bills & everyday living expenses
- Around 9% belong to no pension,  $\frac{3}{4}$  of these are age 45+

70% work additional hours at least once a week,  
16% do so on every shift

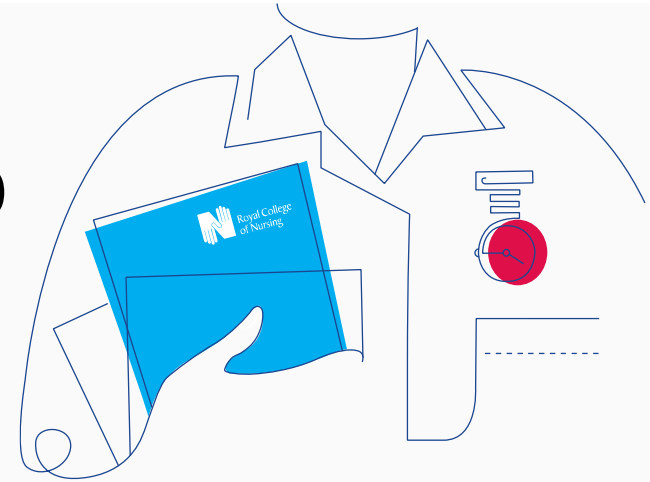
59% too busy to provide the care they would like to

59% at work when ill

Less than  $\frac{1}{2}$  would recommend nursing as a career



# What we do



- We are both a professional body, carrying out work on nursing standards, education and practice, and a trade union.
- We represent the professional interests of nursing staff working in the public, private and voluntary sectors.
- We are on the NHS Staff Council, which negotiates pay, terms and conditions for NHS staff. We can also bargain for pay, terms and conditions with independent sector organisations. We are represented in social partnership arrangements in England, Scotland, Wales and Northern Ireland.
- Our stewards, safety reps and learning reps represent members across the UK

# What we do contd.

- We offer our members free, confidential advice and support on employment matters, career development, immigration, welfare and more.
- We support and protect the diversity of the nursing profession by actively promoting inclusion. We provide accredited reps with the tools to challenge discrimination in the workplace.
- We promote and engage in nursing research, recognising that high quality nursing research has the power to transform patient care.



# We influence

- We lobby governments and other bodies across the UK to develop, influence and implement policy that improves the quality of patient care.
- Through our campaigns, we encourage health care officials and elected representatives to recognise the importance of nurses, health care assistants and nursing students to outcomes for patients.
- We provide expert advice to parliamentarians on developing healthcare policies through legislation, select committees, all-party parliamentary groups and parliamentary briefings, and attend all of the major UK party conferences. We have no ties to any political party and we take pride in our political independence.

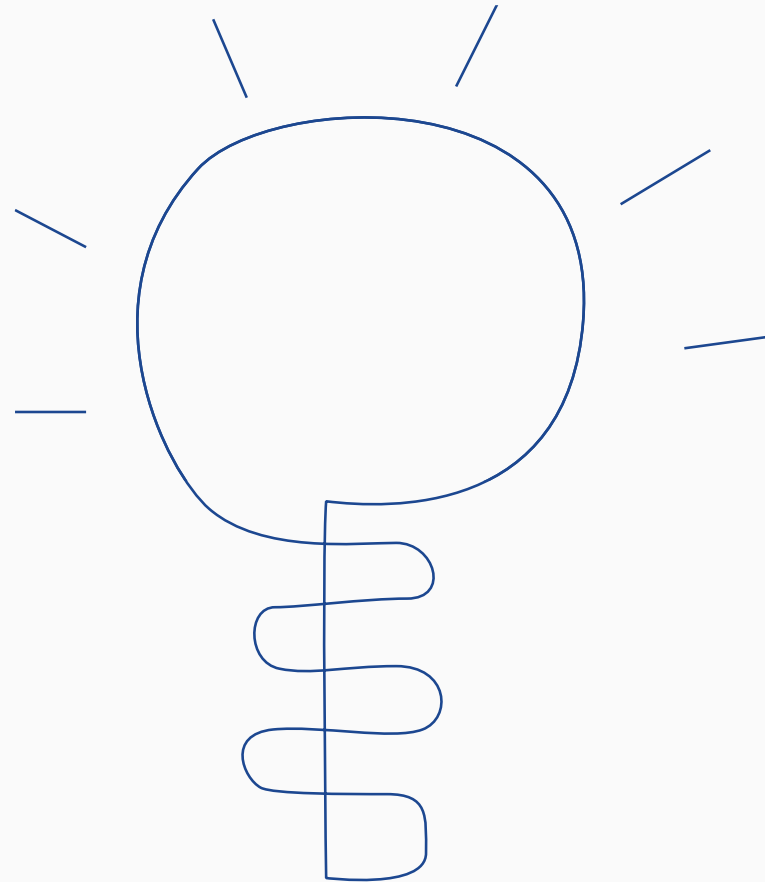
## Why the **RCN**?

- **Nursing-specific trade union and professional association**
- **Library services**
- **Support with your practice placement**
- **Largest legal team of any union in the UK**
- **Advice and support on professional issues arising during your studies**
- **Careers and financial advice**

**When you need us, RCN Direct is available to all members providing help and advice at the end of a phone or online.**

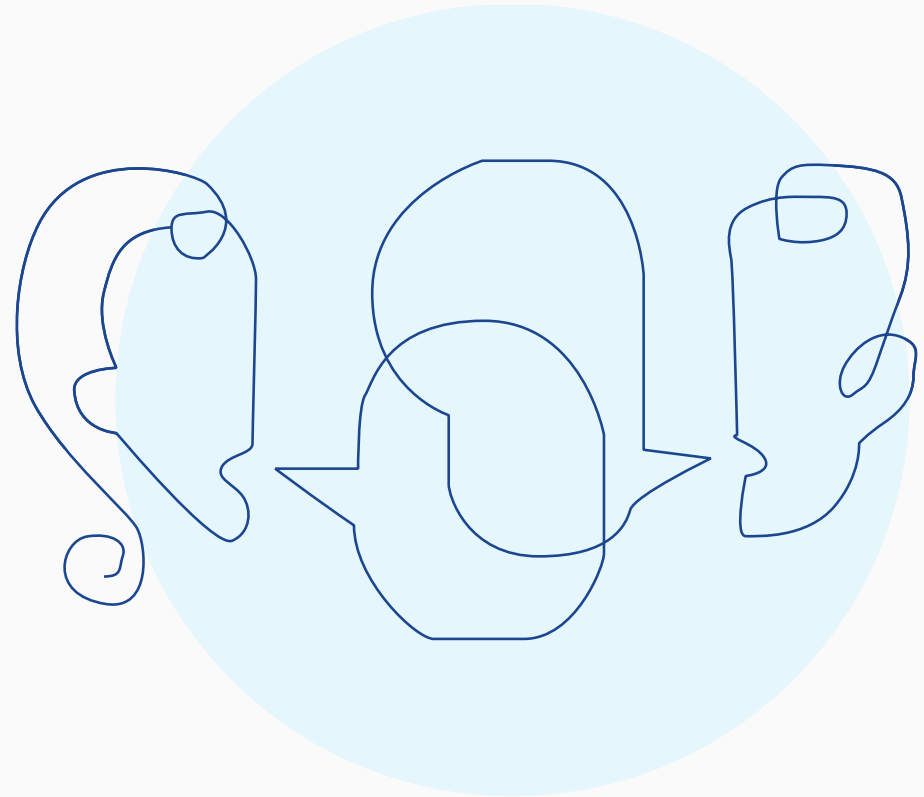
**0345 772 6100**

**8.30am to 8.30pm, 365 days a year.**



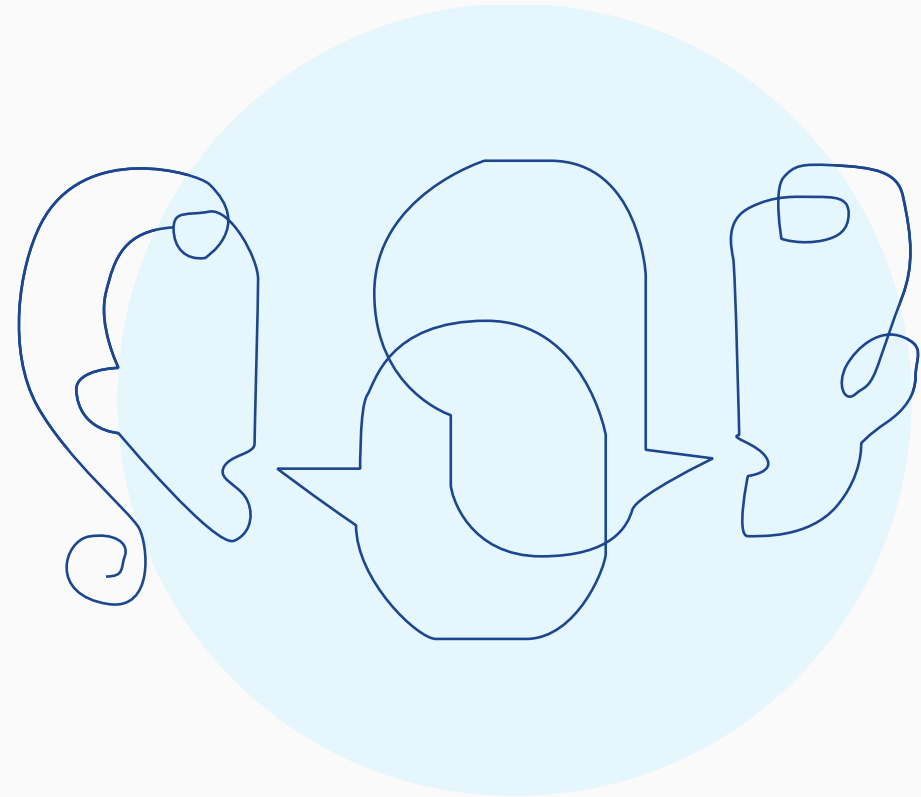
**Help and support through your clinical placements.**

**Advice and guidance on bursaries and finances with our online **Student money guide.****



**The RCN has the largest legal team of any union in the UK.**

**We offer advice on any matter of employment, personal injury and regulatory law which occurs in the course of employment as an HCA or on clinical placement as a student.**



Scrap  
the cap!

#NursingCounts

#BursaryOrBust



We're **actively campaigning...**  
for nurses wellbeing and to ensure they are able to  
deliver effective and safe care to patients.



Royal College of Nursing  
Shaping nursing since 1916

## The RCN online:



[royalcollegeofnursing](https://www.facebook.com/royalcollegeofnursing)



[@RCNstudents](https://twitter.com/@RCNstudents)



[www.rcn.org.uk](http://www.rcn.org.uk)

