

**A1058 Coast Road**  
Improvements **A19**  
Public Consultation



## Introduction

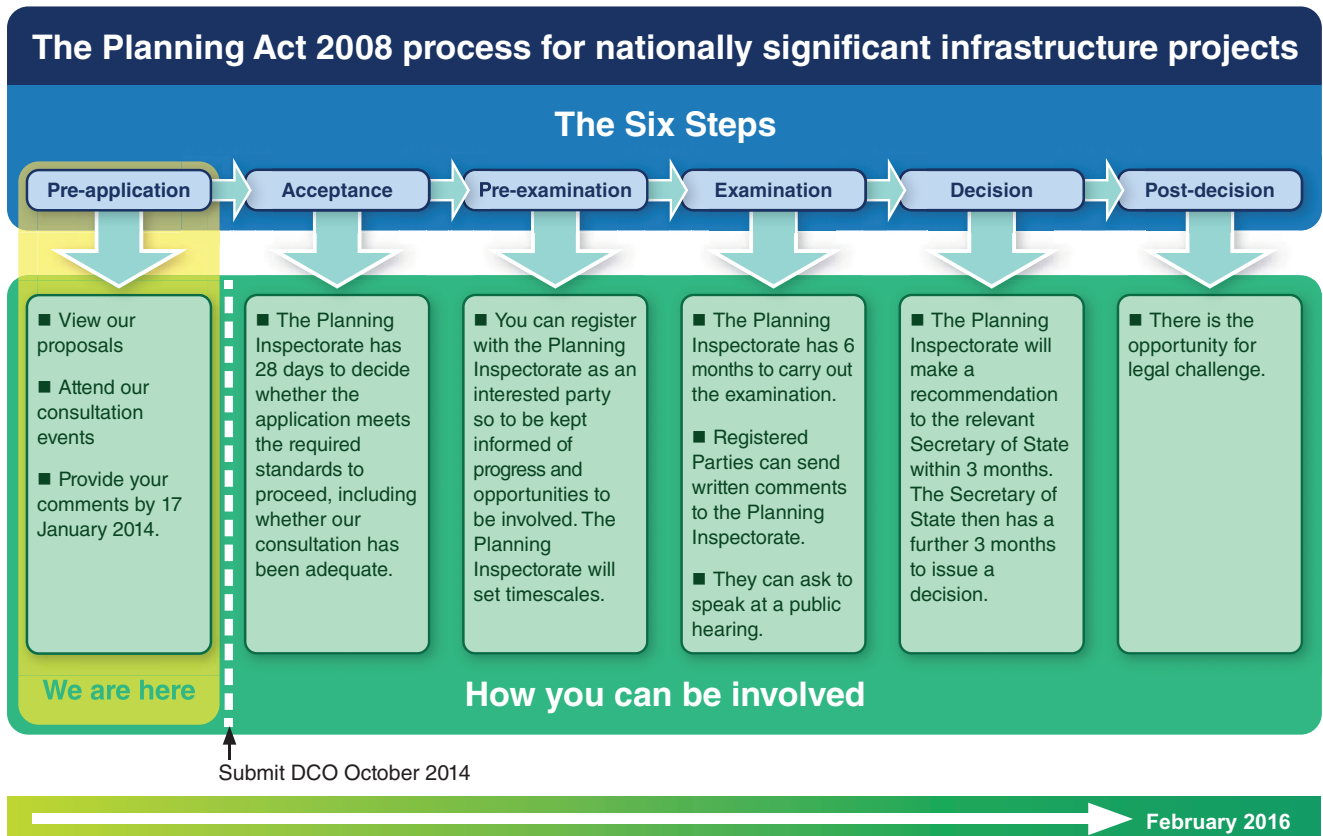
The Highways Agency is proposing to improve the A19/A1058 Coast Road junction. The objectives of the project are to increase capacity, improve journey reliability and improve safety for both road users and local residents.

A consultation exercise was held between November 2009 and March 2010 on three recommended options and three non-recommended options. This process culminated in a preferred route announcement in July 2012.

Since the preferred route announcement the design has been developed further. We are now able to present our proposed road improvements in more detail and are seeking your views on them.

The project is classed as a nationally significant infrastructure project under the Planning Act 2008. As such we are required to make an application for a development consent order (DCO) to construct the project. We intend to make our application by autumn 2014. The application will be made to the Planning Inspectorate who will examine the application and make a recommendation to the Secretary of State for Transport, who will make a decision on whether the project should go ahead.

The consultation runs from 22nd November 2013 to 17th January 2014. All responses to this consultation will be considered and will influence where possible, further refinements to the proposals.





The proposed route



View of proposed junction looking North



## The proposed route

### Area 1: A19/A1058 Coast Road Junction

We will be:

- Lowering the A19, beneath the existing roundabout, in a cutting to provide a free flowing link;
- Constructing two bridges to carry the roundabout traffic across the lowered A19;
- Constructing a replacement bridge to support the A1058 Coast Road across the junction; and
- Constructing new slip roads to provide access to the junction to and from the lowered A19.

Changes since the preferred route announcement

- Reviewed the design of the lowered A19 to minimise the impact of the new slip roads on the Middle Engine Lane Railway Bridge.
- Reviewed the structure requirements to minimise the impact on the A1058 Coast Road.
- Reviewed the landtake requirements to reduce the total needed to construct the scheme.



Overview of proposed junction

## Area 2: Middle Engine Lane Railway Bridge

We will be:

- Widening the existing structure over the Middle Engine Lane Railway Bridge to accommodate the new slip roads.

There are two options available as follows:

### Option 1



### Option 2



## Environmental considerations

The Planning Inspectorate confirmed in September 2013 that the project is not an environmental impact assessment development (EIA) as defined by the Infrastructure Planning (Environmental Impact Assessment) Regulations 2009. However, the Planning Inspectorate have asked us to carry out environmental reporting into the impacts of the project, on the topics below, which will indicate in general terms the mitigation measures that we expect to use in order to minimise negative effects. The findings will be consulted on and form part of our DCO application to the Planning Inspectorate.

|  |  |
|--|--|
| <b>Air quality</b>                             | We will consider emissions that may arise from the project during construction and once open to traffic. We have started a six month air quality monitoring programme in the local area.   |
| <b>Cultural heritage</b>                       | This topic covers archaeological remains, historic buildings and landscapes. We will cover direct impacts as well as how the project affects the settings and landscapes of potentially important assets.  |
| <b>Landscape and visual amenity</b>            | We will consider the effects on the local landscape and on the quality of views. We will propose planting in appropriate locations in order to mitigate the effects of the project on the landscape and visual amenity.  |
| <b>Ecology and nature conservation</b>         | We will consider the effects on ecologically important sites at local, regional, national and international levels as required by relevant regulations. We will also consider various species including great crested newts. We are currently updating our ecological survey data. |
| <b>Geology and soils</b>                       | We will document the outcome of recent ground investigation surveys. We will consider the disturbance of groundwater, the impact on soil quality and the disturbance of any contaminated land.   |
| <b>Waste and Materials</b>                     | We will identify opportunities where possible to reduce, reuse or recycle waste.   |
| <b>Noise and vibration</b>                     | Traffic flow data and construction methodology will be used to assess the noise and vibration impacts of the project during construction and operation.  |
| <b>Effects on all travellers</b>               | We will consider safety, journey time, congestion and accessibility for everyone along the route.  |
| <b>Road drainage and the water environment</b> | We will assess the effects on surface water, groundwater and flood risk during construction and operation.   |



## What happens next?

Following the consultation we will consider your responses as we develop the proposals further. We will then submit our application for a development consent order to construct the project and include a consultation report which will provide a summary of responses and a description of how these have influenced the application. If the development consent order is granted, we estimate that subject to the construction budget being agreed, works will commence in spring 2016 and that the road will be opened in summer 2018.



## How you can get involved

### Consultation event

Friday 29 November 2013, 2pm – 8pm  
Saturday 30 November 2013, 10am – 4pm

**Travelodge Silverlink Hotel**  
**Silverlink Park**  
**Coast Road**  
**Newcastle-Upon-Tyne**  
**NE28 9ND**

We would encourage you to come along to our consultation event to discuss the proposals in more detail with our project team. If you are not able to attend this event, please complete the questionnaire included with this leaflet or online at the address below. Alternatively you can provide your comments to the project team using the contact details overleaf.

When making comments please provide us with your name and address, or if you prefer your comments to be anonymous, your postcode only. It would also help us if you would identify the nature of your interest in the project.

Further consultation materials, including the statement of community consultation, scheme layout plan, the preliminary environmental information and copies of our consultation event boards are available online at:

[www.highways.gov.uk/  
a19a1058coastroadjunctionimprovement](http://www.highways.gov.uk/a19a1058coastroadjunctionimprovement)

or can be viewed at the locations listed overleaf.

Please ensure your comments reach us by 17<sup>th</sup> January 2014. The questionnaire can also be handed in at the event.

The consultation materials will be available to view at the following locations:

The consultation materials will be available to view at the following locations:

| Location  | Viewing times   |
|---|---|
| <b>North Tyneside Council,</b><br>Planning Reception<br>Quadrant The Silverlink North<br>Cobalt Business Park<br>North Tyneside NE27 0BY<br>Tel: 0345 2000 101    | Monday to Thursday: 08.30 – 17.00<br>Friday: 08.30 – 16.30  |
| <b>Wallsend Library,</b><br>Ferndale Avenue,<br>Wallsend<br>Tyne & Wear NE28 7NB<br>Tel: 0191 643 2075  | Monday: 09.30 – 17.30<br>Tuesday: 09.30 – 19.00<br>Wednesday: 09.00 – 12.30<br>Thursday: 09.00 – 19.00<br>Friday: 09.00 – 17.30<br>Saturday: 09.00 – 17.00.   |
| <b>North Shields Central Library,</b><br>Northumberland Square<br>North Shields NE30 1QU<br>Tel: 0191 643 5270  | Monday: 09.00 – 17.00<br>Tuesday: 09.00 – 19.00<br>Wednesday: 09.00 – 17.00<br>Thursday: 09.00 – 19.00<br>Friday: 09.00 – 17.30<br>Saturday: 09.00 – 17.00.   |
| <b>Howdon Library,</b><br>Churchill Street,<br>Howdon<br>Wallsend NE28 7TG<br>Tel: 0191 643 2070  | Monday: 09.00 – 13.00, 14.00 - 17.30<br>Tuesday: 09.00 – 13.00, 14.00 - 19.00<br>Wednesday: 09.00 – 12.30<br>Thursday: 09.00 – 13.00, 14.00 - 17.00<br>Friday: 09.00 – 13.00, 14.00 - 17.30<br>Saturday: 09.00 – 17.00, 14.00 - 17.00 |
| <b>Battle Hill Library,</b><br>Coastway Shopping Forum<br>Battle Hill,<br>Wallsend, NE28 9JE<br>Tel: 0191 643 2255  | Monday: 09.00 – 13.00, 14.00 - 17.30<br>Tuesday: 09.00 – 13.00, 14.00 - 17.00<br>Thursday: 09.00 – 13.00, 14.00 - 19.00<br>Friday: 09.00 – 13.00, 14.00 - 17.30<br>Saturday: 09.00 – 12.30  |
| <b>South Tyneside Council,</b><br>Customer Service Centre<br>Town Hall & Civic Offices, Westoe Road<br>South Shields, Tyne & Wear, NE33 2RL<br>Tel: 0191 427 7000 | Monday – Thursday: 08.30 – 17.00<br>Friday: 08.30 – 16.30   |
| <b>Jarrow Library,</b> Cambrian Street,<br>Jarrow, NE32 3QN<br>Tel: 0191 489 7786   | Monday: 09.30 – 17.00<br>Tuesday: 09.30 – 19.00<br>Thursday: 09.30 – 19.00<br>Friday: 09.00 – 17.00<br>Saturday: 12.00 – 16.30  |
| <b>Highways Agency,</b> Lateral, 8 City Walk<br>Leeds, LS11 9AT<br>Tel: 0113 2835370  | Monday to Friday: 08.30– 16.30  |

**Please note that viewing locations may be closed on bank holidays.**



Paper or CD copies of the consultation materials can be provided on request. There will be a charge for some documents. Please contact the project team for further details regarding prices and payment methods.

## Making your comments

Comments on our proposals can be made by:

- Completing our questionnaire. This is enclosed with this leaflet and available to complete online on the project webpage at:

[www.highways.gov.uk/a19a1058coastroadjunctionimprovements](http://www.highways.gov.uk/a19a1058coastroadjunctionimprovements)

Alternatively a paper copy can be requested free of charge by contacting the project team as follows.

- Email - [a19coastroadenquiries@highways.gsi.gov.uk](mailto:a19coastroadenquiries@highways.gsi.gov.uk)
- Writing to us at: A19/A1058 Coast Road Project Team, Highways Agency, Lateral, Major Projects North, 8 City Walk, Leeds, LS11 9AT

If you have any questions about this consultation, please contact the project team using any of these details or by calling us at **0113 2835370/0113 2835810**



Enterprise  
www.enterprise.co.uk

W07142

W07142

If you need help using this or any other Highways Agency information, please call **0300 123 5000** and we will assist you.

Information provided in response to this consultation, including personal information, may be published or disclosed in accordance with the access to information regimes (these are primarily the Freedom of Information Act 2000 (FOIA), the Data Protection Act 1998 (DPA) and the Environmental Information Regulations 2004).

If you want the information that you provide to be treated as confidential, please be aware that, under the FOIA, there is a statutory Code of Practice with which public authorities must comply and which deals, amongst other things, with obligations of confidence. In view of this it would be helpful if you could explain to us why you regard the information you have provided as confidential. If we receive a request for disclosure of the information we will take full account of your explanation, but we cannot give an assurance that confidentiality can be maintained in all circumstances. An automatic confidentiality disclaimer generated by your IT system will not, of itself, be regarded as binding on the Agency.

The Agency will process your personal data in accordance with the DPA and in the majority of circumstances; this will mean that your personal data will not be disclosed to third parties. Confidential responses will be included in any statistical summary of number of comments and views expressed.

© Crown copyright 2013.

You may re-use this information (not including logos) free of charge in any format or medium, under the terms of the Open Government Licence. To view this licence:

visit <http://www.nationalarchives.gov.uk/doc/open-government-licence/>

write to the Information Policy Team, The National Archives, Kew, London TW9 4DU,  
or email [psi@nationalarchives.gsi.gov.uk](mailto:psi@nationalarchives.gsi.gov.uk).

This document is also available on our website at [www.highways.gov.uk](http://www.highways.gov.uk)

If you have any enquiries about this publication email

[ha\\_info@highways.gsi.gov.uk](mailto:ha_info@highways.gsi.gov.uk) or call **0300 123 5000\***.

Please quote the Highways Agency publications code **PR107/13**.

Highways Agency media services Leeds. Job number N130372

Printed on paper from well-managed forests and other controlled sources

\* Calls to 03 numbers cost no more than a national rate call to an 01 or 02 number and must count towards any inclusive minutes in the same way as 01 and 02 calls. These rules apply to calls from any type of line including mobile, BT, other fixed line or payphone. Calls may be recorded or monitored.