

**Meeting:** Children, Education and Skills Sub-committee  
**Date:** 18 January 2016  
**Title:** Children and Young People's Plan 2014-18 update

---

**Author:** Bruce Parvin Tel: 0191 643 7054

**Service:** Policy Performance and Research

**Wards affected:** All

---

### **1. Purpose of Report**

Recommendation 2 of the Child Poverty Sub Group report in 2014 was that the Children, Education and Skills Sub-committee receive a bi-annual performance report on the delivery of the Children and Young People's Plan 2014-18.

The previous report to this sub-committee was in June 2015, and further information was provided to the CYPL Commissioning Executive Board on 22 October 2015. This report represents a mid year progress summary.

### **2. Recommendations**

The Committee is recommended to note the progress made in delivering the Children and Young People's Plan priorities and if considered appropriate provide comments and / or recommendations.

### **3. Background**

- 3.1 North Tyneside's Children and Young People's Plan provides the strategic framework for the integrated planning, commissioning and delivery of children's services, in order to improve the lives of children and young people. The plan is produced and owned by the Children, Young People and Learning Partnership. Since 2010 the plan has also served as the borough's Child Poverty Strategy, setting out how partners will work together to address the underlying causes of deprivation.
- 3.2 In 2014 the Children, Young People and Learning Partnership agreed to develop a new plan. Partners recognised the need to further integrate children's services to address the complex issues facing children and young people in the borough. The new Children and Young People's Plan 2014-18 was approved by Council in September 2014.
- 3.3 North Tyneside Council's Overview and Scrutiny Committee's 'Review of Child Poverty' report was published in 2014 and included the recommendation that the Children, Education and Skills Sub-committee should receive bi-annual progress reports on the implementation of the Children and Young People's Plan.

3.4 Cabinet accepted Overview and Scrutiny's recommendation on the 10 March 2014 and agreed that the first report on the new Children and Young People's Plan would be presented at the June 2015 Children, Education and Skills Sub committee meeting. This report represents the next of the bi-annual updates.

#### **4. Detail**

The updated report including key performance information is attached at Annex A.

#### **5. Conclusion**

Committee members are requested to note the progress made against the Children and Young People's Plan and make any further comments or recommendations around the delivery of the shared priorities, or any further information required.

#### **6. Background Information**

The following documents have been used in the compilation of this report and may be inspected at the offices of the author.

- Various Children's Social Care Management Information reports
- Management Information reports to the North Tyneside Local Safeguarding Children's Board
- Department for Education Statistical First Release (SFR) information.

**North Tyneside Children, Young People and  
Learning Partnership**

**Children and Young People's Plan  
2014-18**

**Progress Update (January 2016)**

## 1. Introduction

This report is to update the Sub Committee in relation as to performance for 2015/16 year to date, as measured through a range of Performance Indicators, some of which are reported nationally and for which comparative Regional and National figures are available.

The nature of the information reflected in the indicator will reflect the nature and frequency of reporting. Some management information lends itself easily to ongoing performance measurement such as number of referrals to children's Social Care or number of Looked After Children (LAC), whereas data such as that on examination attainment is only made available annually and therefore will not show changes if monitored on a month to month basis.

This report summarises performance, paying attention to the main performance indicators which are derived from the returned data by the Department of Education.

This is supported by the Performance Scorecard attached at Appendix A, and supporting charts illustrating historic changes in some of the indicators highlighted. The Performance Scorecard reflects the framework being introduced in CYPL including other multiagency boards such as the North Tyneside Safeguarding Children's Board

## 2. Ready for School

- 2.1 There is a positive improved position to report in relation to Foundation stage development with North Tyneside's % of pupils showing a **good level of development** having increased from 58.9% to 64.4% in according to provisional data published for 2015. The National trend is also improved and shows a comparable increase form 60.4% to 66.3 % Regional, compared to an average of 63.1% we rank 6<sup>th</sup> of the 12 North East authorities.
- 2.2 According to Ofsted data as at 31 July 2015, 99.4% of Children attend primary schools which are rated "good or outstanding", this compares favourably to regional and national averages of 89.4 and 80.2% respectively.
- 2.3 The comparable figures for Secondary Schools show 87.1% of pupils attend Schools rated as "good or outstanding", compared to regional and national averages of 72.4% and 75.2%. Only South Tyneside has a higher figure in the Region for secondary education, while we are the highest % in the NE for primary.

### Ready for Work:

#### 3 KS4 results

In North Tyneside, the proportion of pupils gaining 5+A\*-C including English and maths is 61.4% compared to a national rate of 52.8%. North Tyneside is first in the region for this measure, above Stockton at 58.6%. North Tyneside is ranked 27<sup>th</sup> in the country (of 151 LAs), which is top quintile (20%) performance.

This represents an increase of 5.2% from our published final measure of 56.2% in 2014; however caution should be advised in these comparisons due to the inclusion of Kings Priory School data for the first time in 2014.

#### 4 KS5 Results

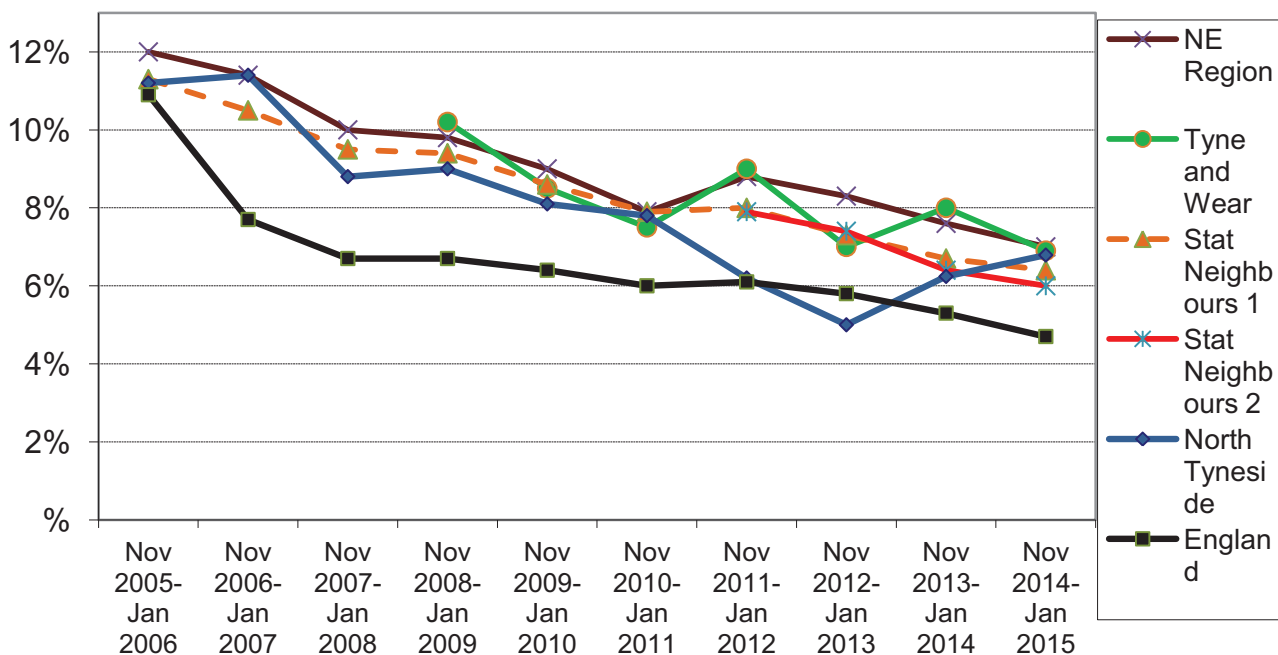
Provisional KS5 results, also released this month shows that performance is largely in line with 2014 levels. Average point score (APS) per entry in 2015 was 212.3 (210.9 in 2014), with Regional averages of 210.7 in 2014 and 212.3 respectively. APS per student was 699.9 in 2015, an increase of 2.9 points on the 2014 score of 697.0. Both indicators are marginally above the 2015 national (state funded sector) averages of 211.9 and 682.6 respectively.

#### 5 16-18 Not in Employment Education or Training (NEET):

Taking an average of monthly figures between Nov 2014 & Jan 2015, there was a total of 470 (6.8%) of 16-18 year olds identified as NEET. This compared to a national average of 4.7%, and a regional figure of 7.0% which placed us 5<sup>th</sup> of the 12 North East authorities.

The increase in 16-18 NEET reported over the last two years noted, has seen North Tyneside performance move in line with the Regional Average, whereas the previous 2012 figure was encouragingly but exceptionally low (5.0%, compared to all other Regional figures being over 7%).

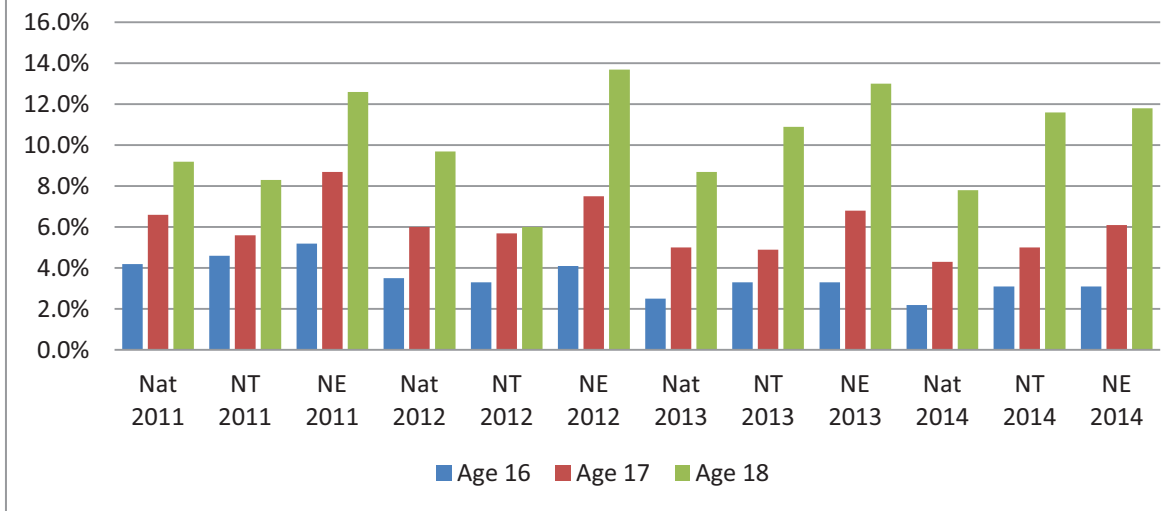
**% 16-18 NEET (Not in Education, Employment or Training):  
North Tyneside vs National, Statistical and Regional Neighbours**



In line with this increase the gap between Local and national performance is again around 2.0%, in line with previous levels in 2007 through to 2010.

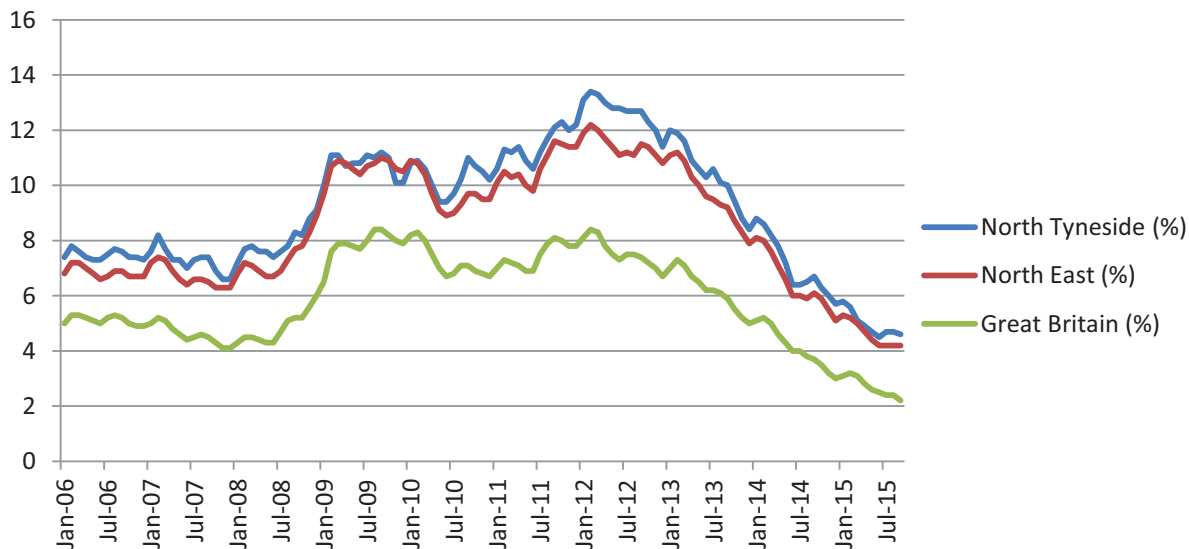
The key issue would not lie specifically at Age 17 but increases between 16- 18) as demonstrated in the table below with age. North Tyneside (NT), National and NE Regional data are shown for comparative purposes.

### Comparison of % NEET rates for 16,17 & 18 year olds 2011-14



Looking at the number of job seekers allowance claimants over a similar period there is little correlation with 18-24 JSA Claimant trends. North Tyneside has closely matched the Regional Average figures in respect of this, and has been decreasing since peaking at 13.4% in early 2012, to the latest rate of 4.6% (Sept 2015).

### % Jobseekers allowance claimants aged 18-24 since 2006



The CYPL Commissioning Board enquired as to whether there was a specific link to the attainment gap – FSM v Non FSM qualified to level 3; while generally above the National figure (circa 25% difference) this is the first year North Tyneside at 33% has been above the Regional average (31%) since 2007(NT 33% v NE 31% - SFR11 2015 refers)

## 6 Safe, Supported and Cared For

An analysis of the relevant Performance Indicators suggests the following key points:

- In 2014/15 Child in Need activity by the service reduced as did referrals to the Social Care service, however activity continues to be monitored in the current year in respect of

any trends emerging. The CYPL Commissioning Board received a report in 2015 on the source of referrals into children's social care.

- This was not complemented either by a reduction in incidents reported to the service (contacts increased 7694 in 2014 to 7733 in 2015), or by a significant number offered intervention under an Early Help Assessment (660 EHAs in 2014/15).
- In 2014/15 there was an increase in Section 47(Child Protection) enquiries to 101.8 per 10,000 of young people in North Tyneside population; this accounts for 22% of all referrals, although the total of enquiries is still substantially lower than comparator groups;
- The assessment process of the service was managed in a timely manner, with no measurable impact from the transition to the Single Assessment. The vast majority of assessments were completed within the timescales determined as being appropriate at the outset of the case, with a comparable timescale rate as those under the previous assessment system.
- The number of children subject of a Child Protection Plan at the end of March 2015 was increased on previous years. However, this rate is marginally lower than the national average and still significantly lower than the NE average.

## **7 Looked After Children are covered by indicators 16-24**

An analysis of these suggests the following key points:

- The number of children looked after by the Local Authority at 31<sup>st</sup> March has been stable over recent years, however this has increased in the year to date. Although peaks and troughs of children entering or leaving care are evident, there has been no dramatic change in performance levels over the last four years.
- The stability of placements for children is a mixed picture, with different performance within different groups of children. Performance is strong and improved for children under 16 looked after long term, but weak for children aged over 16. This is shown in the fact that:
  - 70.7% of children looked after for more than two and a half years, were in the same placement for at least the last two years in 2014/15. This rate places the local authority above comparator groups, and would move the Local Authority from bottom quartile to top quartile based on 2013/14 results.
  - 42.4% of children leaving care over the age of 16 did so at the age of 18. However, this is indicative of the increase in older children becoming looked after over the age of 15. The majority of young people who had been looked after since before the age of 15 remained in placement until they were 18 (10/15), while few children entering care after that date remained until they were 18 (4/18). It should also be noted that 6 of these children were looked after for under 20 nights.
- The length of adoption practice continues to differ based on the individual circumstances of children; again the relatively small numbers involved can impact on indicators, as can the increasing use of Special Guardianship Orders (SGOs) which are measured separately.
- Outcomes for care leavers have improved, with more 19-21 year olds living in suitable accommodation, (e.g. not in bed and breakfast accommodation or similar); At 92.3% this is better than regional and national comparators; We are slightly above these averages in

relation to Care Leavers in Education, Employment or Training, though the relatively low numbers involved mean there is scope for significant year on year variation.

## 8 **Conclusion**

The CYPL Commissioning Executive is invited to comment on this report, produced in line with the emerging “Scorecard” being developed with CYPL. Suggestions as to the appropriateness of the indicators to be included are welcomed, particularly with regard to multi-agency working.



		Children and Young People's Plan 2014-18 : Performance Update							Appendix A		
Theme	CYPL CE Ref	Definition	2012/13	2013/14	2014/15	2015/16	Latest Comparators				
							England	North East			
Ready for School	1	Percentage making a 'good level of development' within Foundation Stage Profile - 2014/15 academic year provisional data	48.3%	58.9%	64.4%	n/a	66.3%	63.1%			
	2	Ofsted Percentage of primary pupils in good/outstanding schools (as at July 2015)	n/a	n/a	n/a	99.4%	80.2%	89.4%			
	3	Ofsted Percentage of secondary pupils in good/outstanding schools (as at July 2015)	n/a	n/a	n/a	87.1%	75.2%	72.4%			
	4	KS4 Results : The proportion of pupils gaining 5+A*-C including English and maths	n/a	56.2%	61.4%		56.3%	54.4%			
Ready for Work and Life	5	KS5 Results : Average Point Score per Student	n/a	697.0	699.9		682.6	649.6			
	6	Percentage of 16-18 year olds NOT in education, employment or training	n/a	n/a	6.8%		4.7%	7.0%			
	7	Key Stage 5 destination -UK Higher Education 2012/13 cohort as at Jan 2015 (State funded mainstream only)%	56%	62%			58%	60%			
	8	Key Stage 5 destination -Apprenticeship 2012/13 cohort as at Jan 2015 (State funded mainstream only)	8%	7%			6%	7%			
	9	Percentage of young people at age 19 qualified to at least level 3	55%	58%			0.6	52%			
	10	Number and rate per 10,000 of referrals to Children's Social Care	472.0	564.8	460.3		573.0	659.8			
	11	Number and rate per 10,000 of Children in Need	382.1	388.0	267.1		346.4	456.7			
	12	Number and Rate per 10,000 of Section 47 (Child Protection) enquiries	67.9	87.8	101.8		124.1	135.7			
	13	Number and rate of children subject to Child Protection Plans	31.4%	38.9%	41.8%		42.1%	59.3%			
	14	% Child Protection Plans lasting 2 years or More	1.4%	0.5%	0.9%		4.5%	2.5%			
Safe, Supported and Cared For	15	Initial Children Protection Conferences within 15 working days of Section 47	87.3%	94.4%	88.6%		69.3%	77.4%			
	16	Number of Looked After Children per 10,000 who are the responsibility of the Local Authority	74	73	75.6	80.8	60	81			
	17	Long Term Placement Stability: Children Looked After for More than 2.5 years, in the same placement for 2 years	59.6%	62.0%	70.7%		67.0%	65.3%			
	18	Short Term Placement Stability: Children Looked After who have had three or more Placements in the last year	11.0%	10.0%	8.9%		11.0%	10.5%			
	19	Reviews of Looked After Children in Timescale	95%	100%	98.7%		Comparator Groups Not Published				
	20	The percentage of children who ceased to be looked after who were adopted	20.0%	19.8%	16.9%		17%	19.5%			
	21	The percentage of children leaving care over the age of 16 who remained looked after until their 18th birthday	42.0%	58.3%	42.4%		67%	51.8%			
	22	Care leavers in Suitable Accommodation aged 19-21*	95.0%	91.2%	92.3%		78%	84%			
	23	Care leavers in Education, Employment or Training aged 19-21*	24%	46.2%	50.0%		45%	49%			
	24	Looked after children with their Health Assessment carried out within timescale guidelines	95.0%	100%	98.1%		88.4%	94.7%			

