

Meeting: Children, Education and Skills Sub-committee
Date: 20 June 2016
Title: Children and Young People's Plan 2014-18 update

Author: Bruce Parvin Tel: 0191 643 7054

Service: Policy Performance and Research

Wards affected: All

1. Purpose of Report

Recommendation 2 of the Child Poverty Sub Group report in 2014 was that the Children, Education and Skills Sub-committee receive a bi-annual performance report on the delivery of the Children and Young People's Plan 2014-18.

The previous report to this sub-committee was in June 2015, and further information was provided to the CYPL Commissioning Executive Board on 22 October 2015. This report represents an end of year progress report.

2. Recommendations

The Committee is recommended to note the progress made in delivering the Children and Young People's Plan priorities and if considered appropriate provide comments and / or recommendations.

3. Background

- 3.1 North Tyneside's Children and Young People's Plan provides the strategic framework for the integrated planning, commissioning and delivery of children's services, in order to improve the lives of children and young people. The plan is produced and owned by the Children, Young People and Learning Partnership. Since 2010 the plan has also served as the borough's Child Poverty Strategy, setting out how partners will work together to address the underlying causes of deprivation.
- 3.2 In 2014 the Children, Young People and Learning Partnership agreed to develop a new plan. Partners recognised the need to further integrate children's services to address the complex issues facing children and young people in the borough. The new Children and Young People's Plan 2014-18 was approved by Council in September 2014.
- 3.3 North Tyneside Council's Overview and Scrutiny Committee's 'Review of Child Poverty' report was published in 2014 and included the recommendation that the Children, Education and Skills Sub-committee should receive bi-annual progress reports on the implementation of the Children and Young People's Plan.

3.4 Cabinet accepted Overview and Scrutiny's recommendation on the 10 March 2014 and agreed that the first report on the new Children and Young People's Plan would be presented at the June 2015 Children, Education and Skills Sub committee meeting. A subsequent update was reported in January 2016. This report represents the next of the twice-yearly updates.

4. Detail

The updated report including key performance information is attached at Annex A.

5. Conclusion

Committee members are requested to note the progress made against the Children and Young People's Plan and make any further comments or recommendations around the delivery of the shared priorities, or any further information required.

6. Background Information

The following documents have been used in the compilation of this report and may be inspected at the offices of the author.

- Various Children's Social Care Management Information reports
- Management Information reports to the North Tyneside Local Safeguarding Children's Board
- Department for Education Statistical First Release (SFR) information.

**North Tyneside Children, Young People and
Learning Partnership**

**Children and Young People's Plan
2014-18**

2015/16 Year end review (June 2016)

1. Introduction

This report is to update the Sub Committee in relation as to performance for 2015/16, as measured through a range of Performance Indicators, some of which are reported nationally and for which comparative Regional and National figures are available.

The nature of the information reflected in the indicator will reflect the nature and frequency of reporting. Some management information lends itself easily to ongoing performance measurement such as number of referrals to children's Social Care or number of Looked After Children (LAC), whereas data such as that on examination attainment is only made available annually and therefore will not show changes if monitored on a month to month basis.

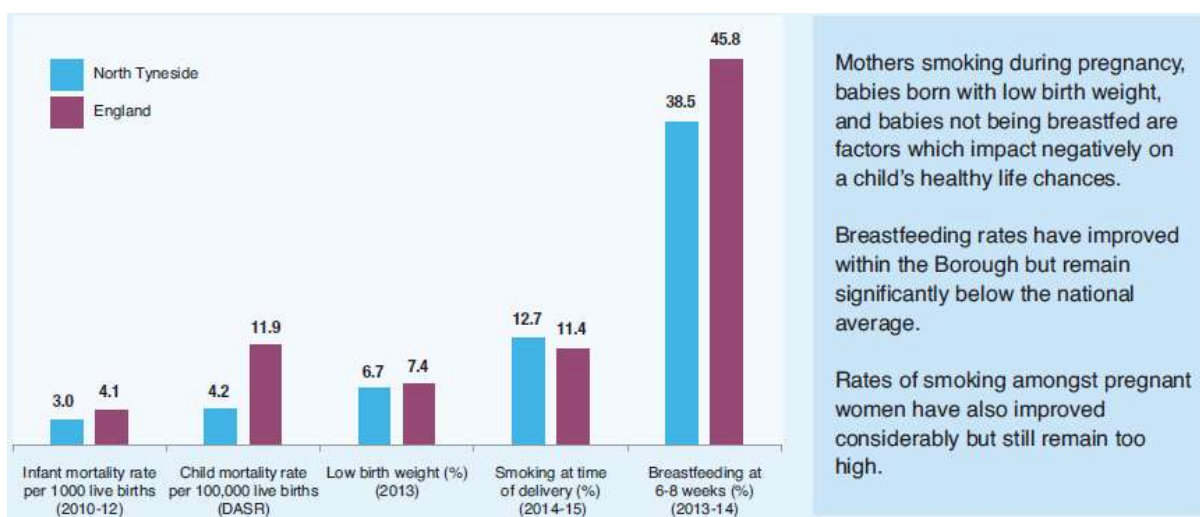
This report summarises performance, paying attention to the main performance indicators which are derived from the returned data by the Department of Education.

This is supported by the Performance Scorecard attached at Appendix A, and supporting charts illustrating historic changes in some of the indicators highlighted. The Performance Scorecard reflects the framework being introduced in CYPL including other multiagency boards such as the North Tyneside Safeguarding Children's Board

2. Ready for School

2.1 While the position in North Tyneside is often better than our regional and statistical neighbours, clearly major challenges remain before in order to try to secure the best start in life for every child living in North Tyneside. Clearly social and environmental factors are a key determinant in this, and a profile of the borough can be found as part of Public Health England's Outcomes Framework at:

<http://www.phoutcomes.info/public-health-outcomes-framework#gid/1000049>



2.2 According to the latest data available, almost 6,500 (18.3%) of children under 16 are considered to be living in poverty, a percentage marginally lower than the England average of 18.6%; the North Tyneside figure has improved by a count of 990 or 2.9% over the past 5 years.

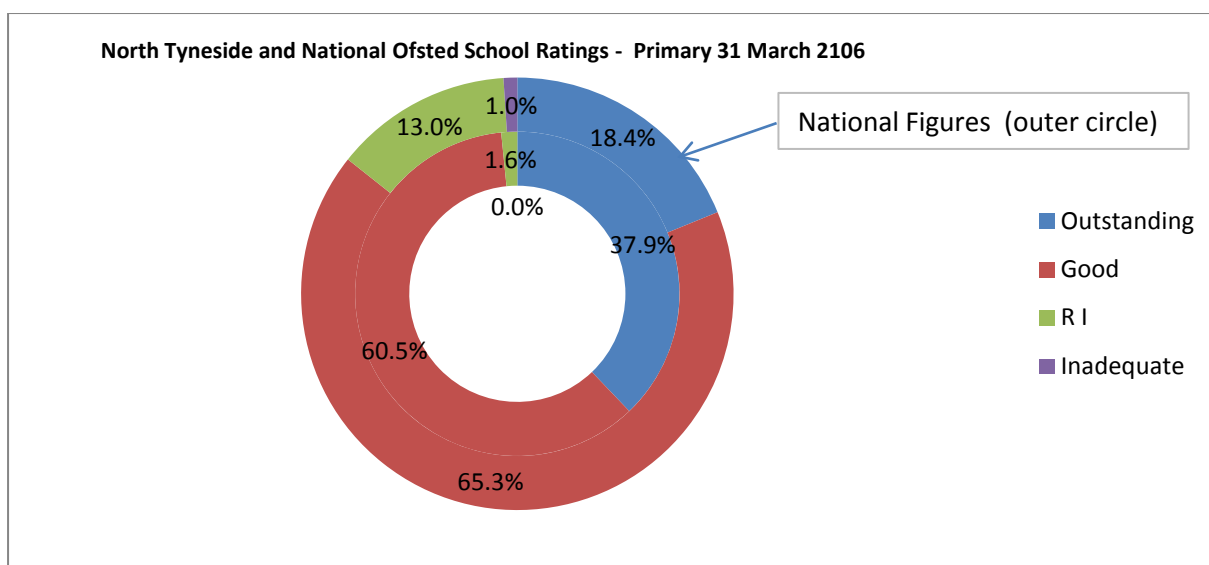
2.3 However in relation to childhood obesity at 4–5 years old , we are slightly above the national average of 21.9%; a similar picture exists when this is next measured at in School Year 6 (10-11 years old)



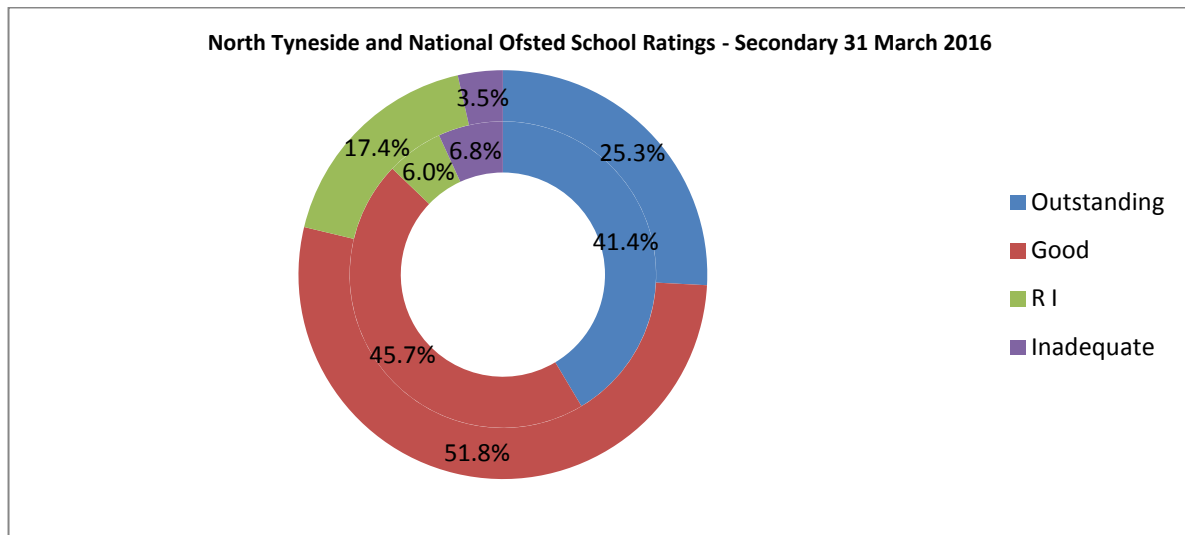
2.4 There is an improved position to report in the last year in relation to Foundation stage development with North Tyneside’s % of pupils showing a **good level of development** having increased from 58.9% to 64.4% in according to provisional data published for 2015. However this should be set in the context of improvements in the National figures also which means we remain below the national average of 66.3 %. We are marginally above the regional average of 63.1%, ranking 6th of the 12 North East authorities.

2.5 In terms of “School Readiness” another widely used measure is the phonics screening results in Year 1, which measures whether children can recognise and interpret sounds, and groups of sounds. 78.0% of pupils reach appropriate level, compared to 76.8% nationally.

2.6 According to Ofsted data as at 31 March 2016, 98.4% of Children attend primary schools which are rated “good or outstanding”, this compares favourably to regional and national averages of 91.4% and 83.7% respectively. The chart below demonstrates the respective figures from North Tyneside (in the inner ring) compared to national statistics across all of the Ofsted grades:



2.7 The comparable figures for Secondary School show 87.1% of pupils attend Schools rated as “good or outstanding”, compared to regional and national averages of 71.2% and 77.1%.

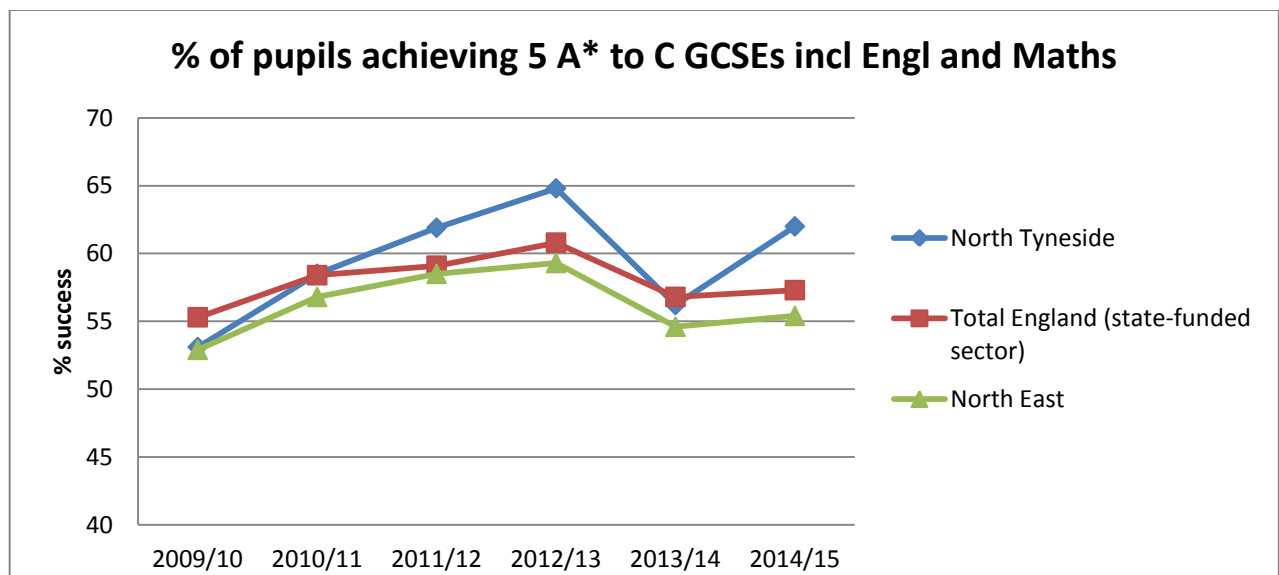


2.8 Only South Tyneside has a higher figure in the North East Region for secondary education, while we have the highest % figure in the NE for primary.

3 Ready for Work:

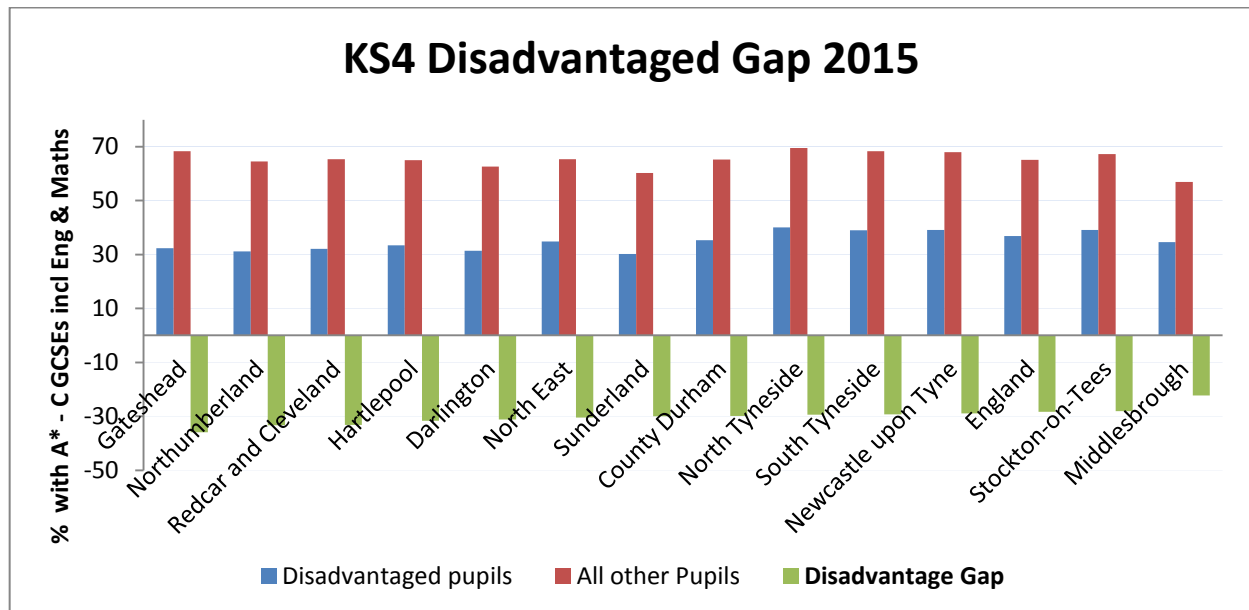
3.1 KS4 results:

In North Tyneside, the proportion of pupils gaining 5+A*-C including English and maths is 62.0% compared to a national rate of 53.8%. North Tyneside ranks first in the region and in comparison with its statistical neighbours for this measure. North Tyneside is ranked 30th in the country (of 151 LAs), which is top quintile (20%) performance. Its improvement of 5.8 percentage points was the third largest in the country.



However despite these excellent results there remains some challenges, particularly in relation to improving education attainment for our disadvantaged pupils, as measured by reference to the differences in the Key Stage 4 results between those children eligible for Free School Meals (FSM), or have been in care or adopted. While attainment for this group in North Tyneside in 2015 was higher than the rest of the North East region, and the national average, the gap between these disadvantaged pupils and all other pupils was slightly larger

than the national average, too large given the Council's aspirations and identified priority to narrow the gap in educational outcomes



3.2 KS5 Results:

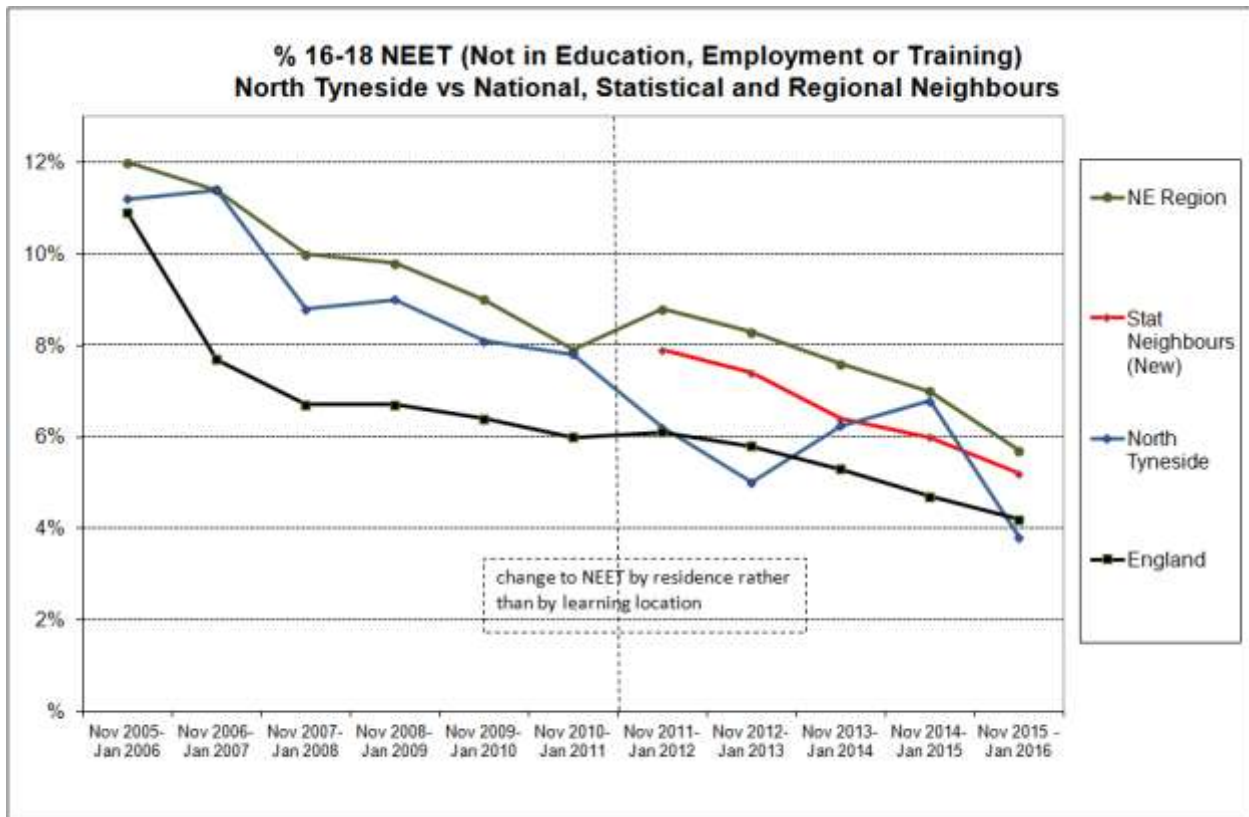
2015 KS5 results, released in January shows that performance is marginally above 2014 levels. Average point score (APS) per entry in 2015 was 213.8 (210.9 in 2014), in line with the regional average. APS per student was 709.9 in 2015, an increase of 12.9 points (1.8%) on the 2014 score of 697.0. Both indicators are above the 2015 national (state funded sector) averages of 213.0 and 700.6 respectively.

3.3 16-18 Not in Employment Education or Training (NEET):

Taking an average of monthly figures between Nov 2015 & Jan 2016, 380(3.8%) of North Tyneside 16-18 year olds were identified as NEET. This compared to a national average of 4.2%, and a regional figure of 5.7%. The 3% fall in from the previous year's figure of 6.8% was the biggest fall in the region and within our statistical neighbour group, and compared to a 0.5% fall in the national rate.

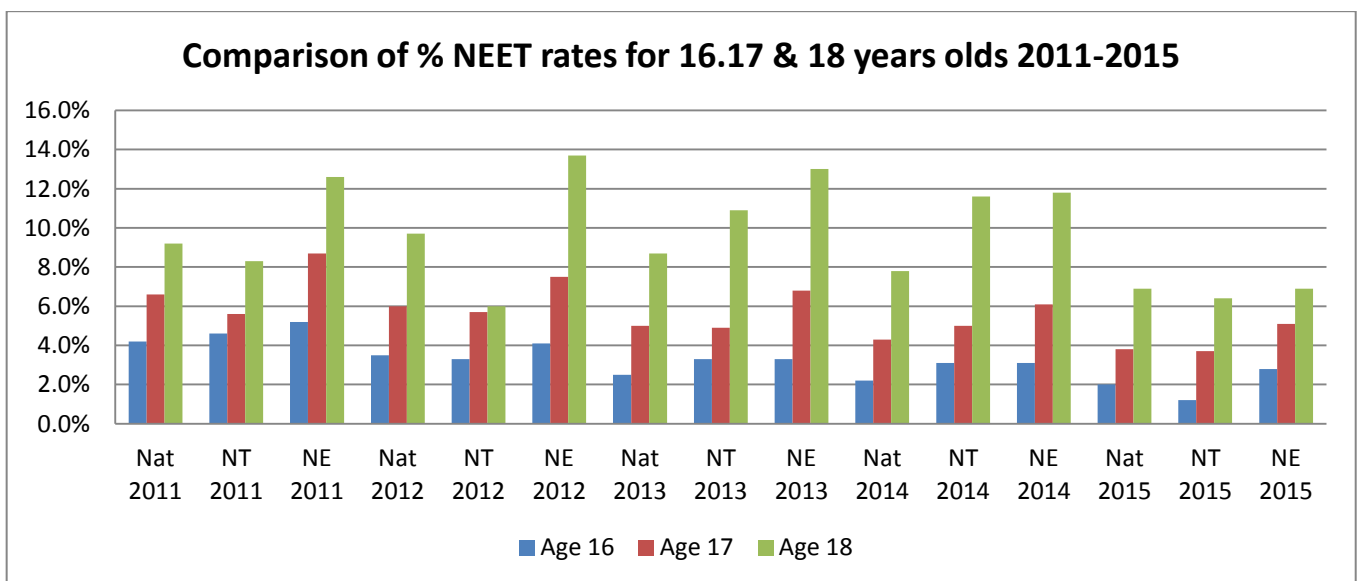
This is a welcome fall in 16-18 NEET, and even given the influence of raising the participation age in education to 18 reported, there has been a clear improvement in our comparative performance relative to national, regional and statistical neighbour over the last twelve months.

The long term trends for the headline measure of % 16-18 NEET are shown below:

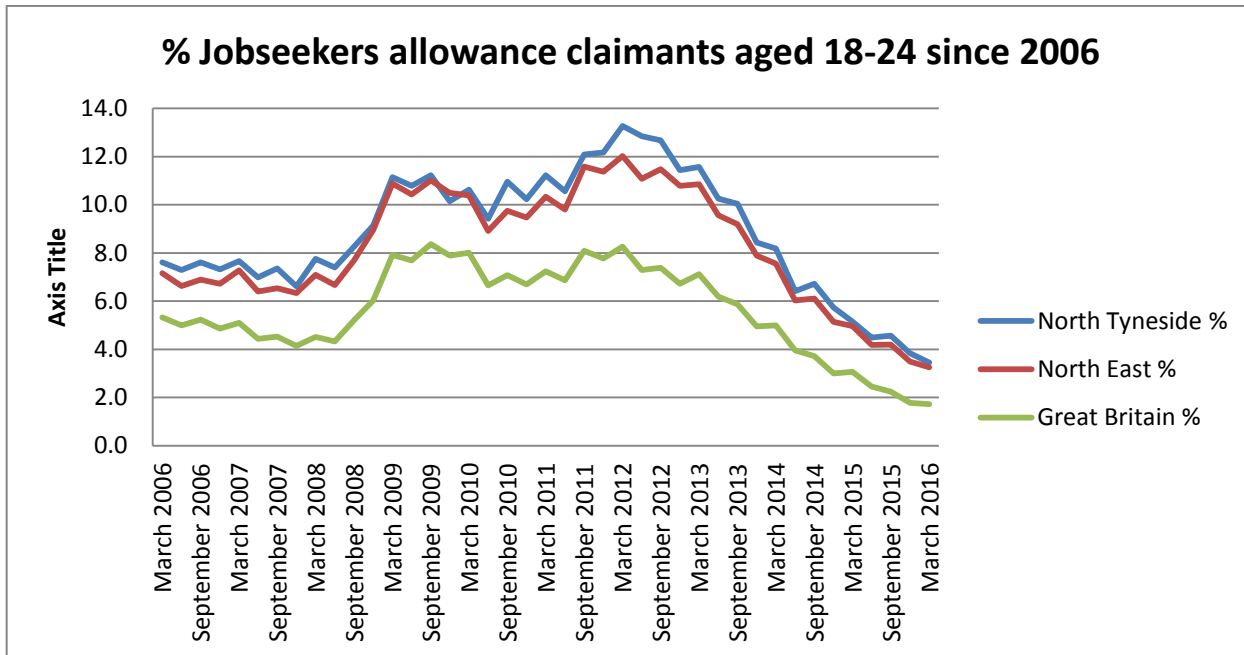


Improvements in the NEET rate for North Tyneside are seen across all ages this year.

- 1.2% of 16 year olds in North Tyneside are NEET, compared to 2.0% nationally and 2.8% regionally.
- 3.7% of 17 year olds in North Tyneside are NEET, compared to 3.8% nationally and 5.1% regionally.
- 6.4% of 18 year olds in North Tyneside are NEET, compared to 6.9% nationally and 9.1% regionally.



Looking at the number of job seekers allowance claimants over a similar period there is little correlation with 18-24 JSA Claimant trends, however it can be noted that there has also been a fall, and that North Tyneside now matches the regional average, and the gap has closed with the national figure also. The trend continues to be downwards since peaking at 13.4% in early 2012, to 3.4%, as at March 2016.



4. Safe, Supported and Cared For

Highlighted below are some of the key indicators in relation to Children's Social Care. A copy of the overall Safeguarding and Preventative Services Performance Scorecard, which contains these and range of other measures is also attached at Appendix A.

4.1 Referrals:

Referrals reduced by 9.7% from 2015 to 2016. Reduction in referrals has not been accompanied by an increase in Early Help Assessments, which have remained stable.

Referrals "per 10k" have been below comparator groups since 2013, and the outturn of 410.6 in 2016 continues to display this. 2016 follows a declining trend, similar to the trend shown in the same period across all comparator groups.

The proportion of referrals which are re-referrals within a 12 month period declined in 2016 to 18.1%. This is a 6.7 point reduction on 2015, which displayed a rate similar to comparators. The trend on this indicator since 2012 has been stable and in line with comparators, suggesting a significant change in performance in 2016.

4.2 Single Assessments

Almost all (94.7%) Single Assessments were completed within 45 working days. This is an increase on the 2015 outturn of 93.6%, which was above comparators and within the top quartile of local authorities.

4.3 S47s Initial Child Protection Conferences

The rate per 10k of Child Protection (Section 47) enquiries initiated was 97.0 in 2016, reduced on the 2015 rate of 101.6. This decline in enquiries is against trend which has been rising since 2012 in both North Tyneside and comparator groups. The rate continues to be below comparators, and places North Tyneside in the fourth quartile for the number of Section 47s initiated.

Two thirds (66.4%) of Section 47s resulted in an Initial Child Protection Conference, remaining in-line although slightly below the 2015 rate of 68%. This conversation rate is above the England rate of 44.5% and the Statistical Neighbour rate of 46.3% for 2015.

4.4 Child Protection Plans

The increasing trend of Children subject of Child Protection plans has continued in 2016, with 179 children subject of a plan at 31st March 2016. This is the equivalent of 44.2 children per 10k and is an increase on the 2015 rate of 41.8. The 2016 rate of CP Plans is above the 2015 England rate of 42.9 per 10k, although below the 2015 Statistical Neighbour rate of 53.1. The north Tyneside rate has risen in line with comparators from 2012.

When measured at the end of each month, children subject of a Child Protection Plan reached a peak in October 2015 of 191 children, while the low of 175 children in July 2015 was still higher than the 2015 year end figure of 169.

Although there was a rise of 5.3% in the number of children commencing a CPP during 2015/16, there was a reduction in the proportion of children who were commencing their second or subsequent plan. This figure reduced from 14.5% of plans commenced in 2015 to 13.8% in 2016. This rate is within the "Good" banding of 10-15%, and below the comparator rates for 2015.

4.5 Looked After Children

292 Children were looked after on 31st March 2016. This is a reduction on the 2015 figure of 304 children. The "per 10k" figure equates to 72.1, the lowest rate since 2011. This places North Tyneside lower than our statistical neighbours(82.8) and the average North East regional rate(81.8) but higher than the England average (60).

However, the number of children who have been Looked After at any point during the year has increased. 459 children were looked after at some point in 2015-16, compared to 440 children in 2014-15. This continues the growing trend of entrances to the Looked After system, with year on year growth since 2011. There has been a 12.2% increase in children being Looked After since 2010/11., higher than the increase in England (8.8%), although lower than the comparable North East rate (14.0%).

4.6 Leaving Care

The indicators show a continuation of high performance of young people in Suitable accommodation (94.2%), above comparator groups and an improving trend over a three year period.

71% of Care Leavers were in employment, education or training in 2015/16. This indicator has shown an improvement on 2015 (although the changing cohort makes this expected). North Tyneside has been above or in line with comparator groups over the last four years, despite the changing cohort.

7.9% of care leavers were in Higher Education during 2015/16. Although this is above comparator groups, it is a reduction on 2014/15.

4.7 Adoption journey

25 children were granted an Adoption Order during 2015/16, 13.8% of all children who ceased to be looked after. Despite this proportion showing a decline from 2015 (14%), it is an increase of two children and shows a relatively stable trend of children being adopted over the last four years. The increase in children entering and leaving the looked after system as a whole has contributed to the decline in % adopted, as has the increase in Special Guardianship Orders (SGOs).

The three years average measures shown in the Adoption Scorecard show North Tyneside as being in line with or worse than comparator groups. However, it is important to monitor performance within the context of each child's individual circumstances - this is discussed in more detail in other children's social care reports.

5 Conclusion:

The CYPL Commissioning Executive is invited to note and provide comments on this report.

Safeguarding and Preventative Services Performance Scorecard										Position at Quarter 4, 2015/16		
										Comparators (Source: DfE Sfr)		
Ref	Definition	2011/12	2012/13	2013/14	2014/15	2015/16				England	Stat Neighbour	North East
						Q1	Q2	Q3	Q4			
CP1	Number and rate per 10,000 of referrals to Children's Social Care ^P	553.0	472.0	558.3	455.0	417	790	1238	1662	548.3	641.8	659.8
						412.1	390.4	407.8	410.6			
CP2	% of referrals to Children's Social Care which are repeat referrals within 12 months ^C	25.9%	24.2%	24.8%	25.1%	21.3%	19.4%	18.3%	18.1%	23.4%	25.9%	22.90%
CP3	% of referrals to Children's Social Care leading to Assessment ^C	79.0%	82.4%	92.8%	85.2%	95.2%	99.6%	98.5%	98.7%	85.9%	96.0%	94.4%
CP4	% of Single Assessments which are completed within threshold timescales ^C	-	-	-	84.7%	85.6%	87.0%	85.3%	85.5%	-	-	-
CP5	Number and Rate per 10,000 of Children in Need ^S	391.8	382.1	388.0	267.1	1380	1409	1398	1338	346.4	387.7	456.7
						341.0	348.1	345.4	330.6			
CP6	Number and Rate per 10,000 of Section 47 enquiries ^P	67.90	67.90	87.80	101.60	96	198	285	393	124.1	152.5	135.7
						94.88	97.84	93.89	97.10			
CP7	% Conversion from Section 47 Enquiry to Initial Child Protection Conference ^C	-	-	-	68.0%	75.0%	68.7%	74.4%	70.0%	44.5%	-	54.4%
CP8	Initial Children Protection Conferences within 15 working days of Section 47 ^C	95.0%	87.3%	94.4%	88.6%	86.8%	90.6%	91.5%	88.9%	69.3%	78.3%	77.4
CP9	Review Child Protection Conferences held within timescale ^S	100%	100%	100%	99.2%	100%	100%	100%	100%	94.0%	96.1%	94.6%
CP10	Number and rate of children subject to Child Protection Plans ^S	40.7	31.4	38.9	41.8	186	183	187	179	42.9	52.4	59.5
						46.0	45.2	46.2	44.2			
CP11	% Children becoming subject to a Child Protection Plan for the Second or Subsequent time ^C	8.3%	12.2%	5.7%	14.5%	7.4%	12.3%	13.4%	13.8%	15.80%	5.6%	12.6%
CP12	% Child Protection Plans Ceased after 2 years ^C	3.7%	1.4%	0.5%	0.9%	0.0%	2.0%	1.2%	0.9%	4.5%	N/A	2.5%
LAC1	Number of Looked After Children per 10,000 ^S	74	73	75.6	75.1	323	319	301	292	60	80	81
						79.8	78.8	74.4	72.1			
LAC2	% Children Looked After and Placed more than 20 miles from Home ^S	4	5.0%	5.6%	6.6%	3.4%	3.1%	3.7%	7.5%	13.0%	6.5%	8.0%
LAC3	% Children with three or more Placements during the Year ^C	10.0%	11.0%	10.0%	10.0%	2.5%	4.1%	7.0%	13.0%	11.0%	9.6%	10.5%
LAC4	% Children Looked After for More than 2.5 Years who have been in the same Placement for More than 2 Years ^S	63.0%	59.6%	62.0%	72.1%	69.1%	72.3%	75.2%	72.6%	67.0%	67.8%	65.3%
LAC5	Number of Children Becoming Looked After ^C	141	138	136	138	60	101	132	170	30430		1980
LAC6	Number of Children Ceasing to be Looked After ^C	124	141	128	136	40	85	134	181	30430		1990
LAC7	Reviews of Looked After Children in Timescale ^S	99%	95%	100%	98.7%	91.1%	99.2%	99.3%	99.3%	N/A		

Safeguarding and Preventative Services Performance Scorecard										Position at Quarter 4, 2015/16		
										Comparators (Source: DfE Sfr)		
Ref	Definition	2011/12	2012/13	2013/14	2014/15	2015/16				England	Stat Neighbour	North East
						Q1	Q2	Q3	Q4			
LAC8	% of Children Ceasing to be Looked After due to Special Guardianship Order ^C	9.0%	8.0%	6.3%	15.7%	7.5%	10.6%	11.9%	13.8%	11.0%	-	11.0%
LAC9	% of Children Ceasing to be Looked After due to Adoption Order ^C	15.0%	20.0%	19.8%	15.7%	10.0%	16.5%	11.9%	13.8%	17.0%	-	19.5%
LAC10	The average time in days between a child entering care and moving in with its adoptive family, for children who have been adopted ^C	589 (3 Yr Average: 614)	590 (614)	720 (655)	650 (668)	283	574	639	627 (667)	593	605	581
LAC11	The average time in days between a local authority receiving court authority to place a child and the local authority deciding on a match to an adoptive family ^C	202 (3 Yr Average: 223)	217 (235)	275 (243)	219 (244)	42	219	268	318 (275)	223	252	203
LAC12	The percentage of children who have waited less than threshold months between entering care and moving in with their adoptive family ^B	48.0%	49.0%	44.0%	50% (45%)	44.4%	44.7%	45.2%	51.4% (44.6%)	47%	-	43%
LAC13	% Children Leaving Care over the Age of 16 who Remained in Care until their 18th Birthday ^C	43%	42%	58%	44%	66.7%	56.0%	59.5%	68.8%	63.9%	67.0%	
LAC14	Care leavers in Suitable Accommodation* ^C	100%*	95%*	91.2%	92.3%	95.7%	95.6%	94.7%	94.2%	79.8%	-	83.5%
LAC15	Care leavers in Education, Employment or Training* ^C	12%*	24%*	46.2%	50%	65.2%	71.1%	71.1%	71.2%	45%	-	49%
LAC16	Average Strengths and Difficulties Questionnaire Score for Children Looked after for 12 months or longer ^C	14.7	16.4	13.8	13.7	13.50	13.70	13.80	14.30	13.9	N/A	13.9

P: Rates are calculated as per 10,000 of the general population. Quarterly rates are "projected" in order to give an annual comparable rate.
C: Rates are Cumulative, showing the activity, rate or percentage from 1st April to the end of the current quarter
S: Rate is a Snapshot, showing the rate, percentage, or activity on the final day of the year or quarter
*: Care Leaver Indicators include 19 year olds up to 2012/13, 19-21 year olds for 2013/14 and 2014/15, and 17-21 year olds for 2015/16