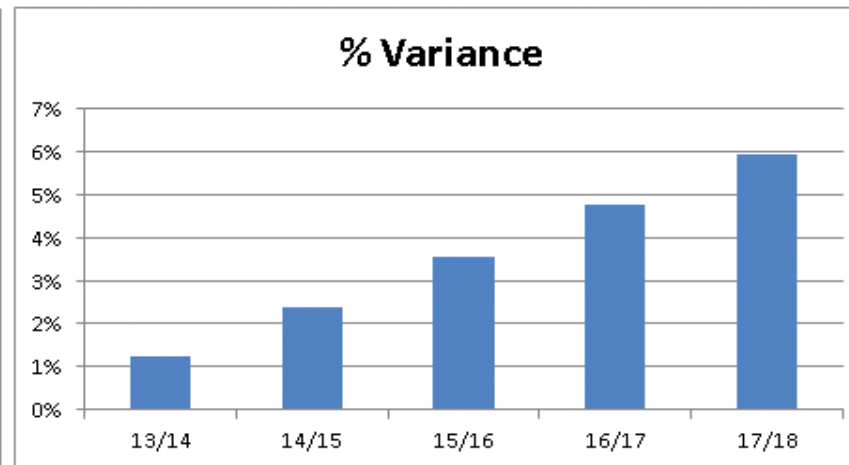
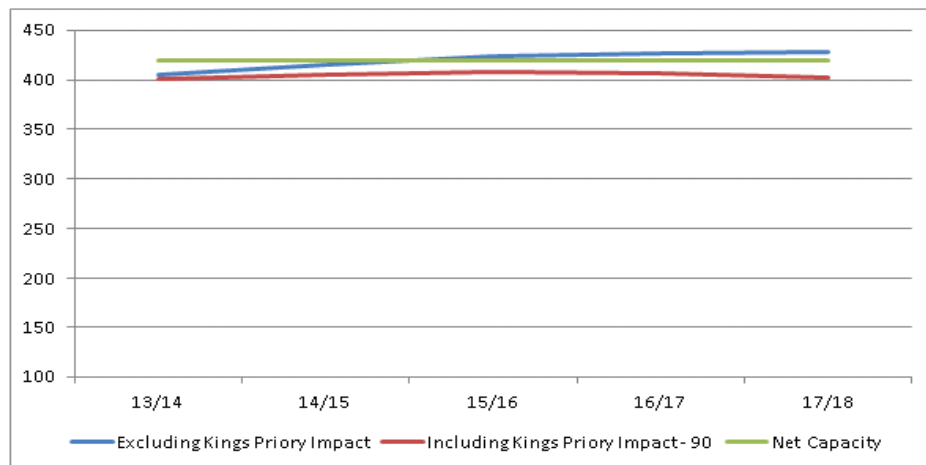


School Name: Cullercoats Primary School

	PROJECTIONS				
	13/14	14/15	15/16	16/17	17/18
Excluding Kings Priory Impact	406	415	423	426	428
Including Kings Priory Impact - 83	403	409	414	414	413
Including Kings Priory Impact - 90	401	405	408	406	403
% Variance	-1%	-2%	-4%	-5%	-6%

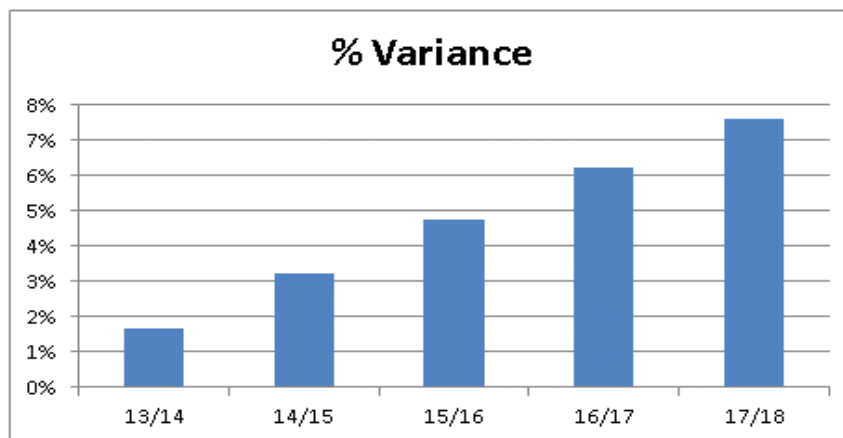
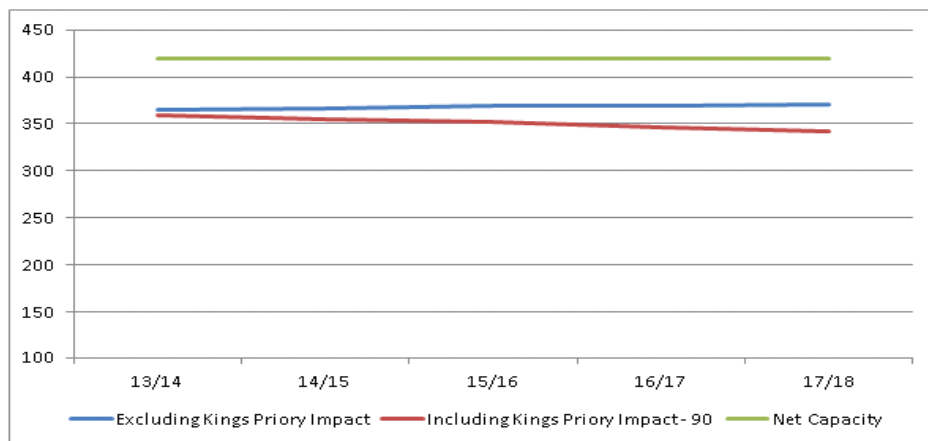


Commentary:

A 2 form entry Primary School.
 Cullercoats Primary School is projected to see a reduction across the whole school equal to half a form of entry.
 If Kings Priory were to admit to 90 in reception then Cullercoats Primary could expect to see a 6% decline in pupil numbers.
 This equates to 83% of a form of entry across the school.

School Name: King Edward Primary School

	PROJECTIONS				
	13/14	14/15	15/16	16/17	17/18
Excluding Kings Priory Impact	366	367	369	369	371
Including Kings Priory Impact - 83	364	363	364	361	361
Including Kings Priory Impact - 90	360	355	352	346	343
% Variance	-2%	-3%	-5%	-6%	-8%

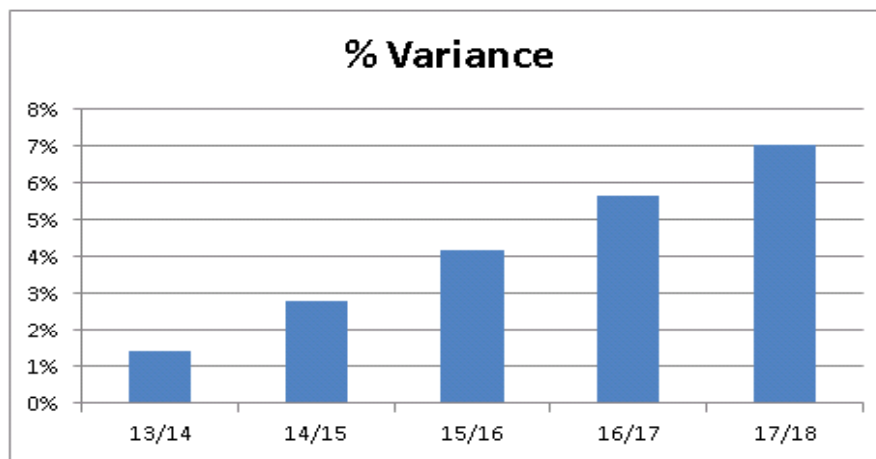
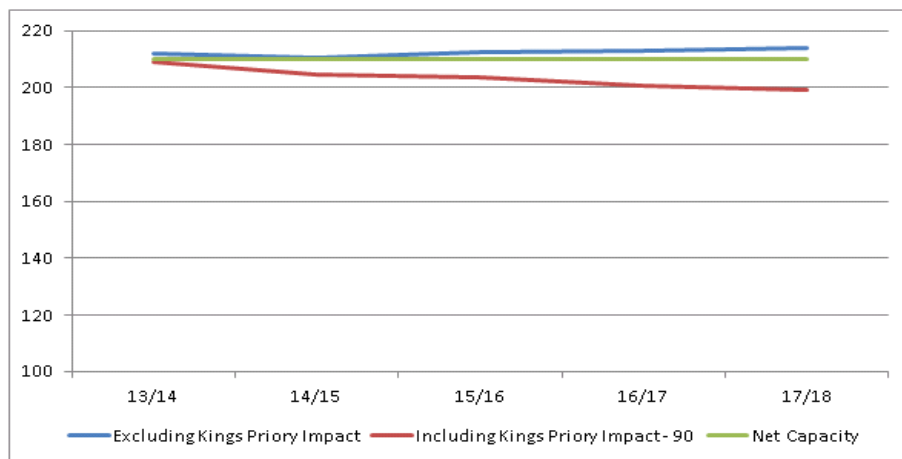


Commentary:

A 2 form entry Primary School
 King Edward primary School is projected to see a reduction across the whole school equal to a third of a form of entry.
 If Kings Priory were to admit to 90 in reception then over 5 years the projected pupil numbers at King Edwards could be expected to decline by 8%.
 This will be equivalent to 1 form of entry across the school.

School Name: St Mary's R C North Shields

	PROJECTIONS				
	13/14	14/15	15/16	16/17	17/18
Excluding Kings Priory Impact	212	210	212	213	214
Including Kings Priory Impact - 83	210	206	206	205	204
Including Kings Priory Impact - 90	209	204	204	201	199
% Variance	-1%	-3%	-4%	-6%	-7%

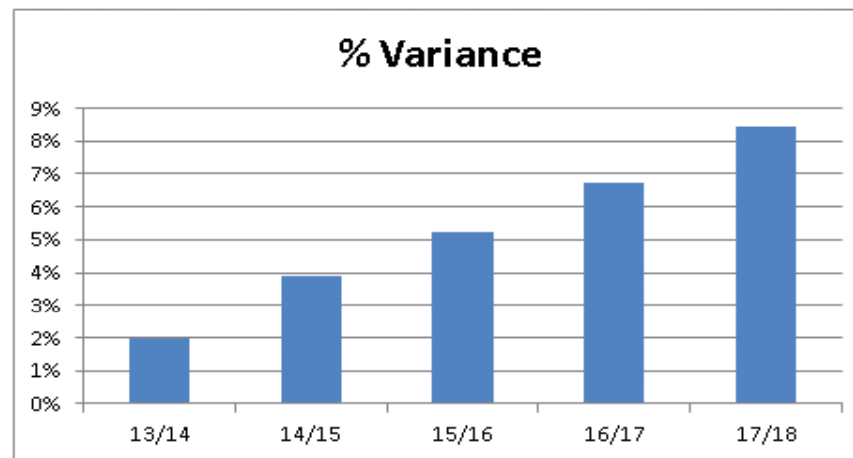
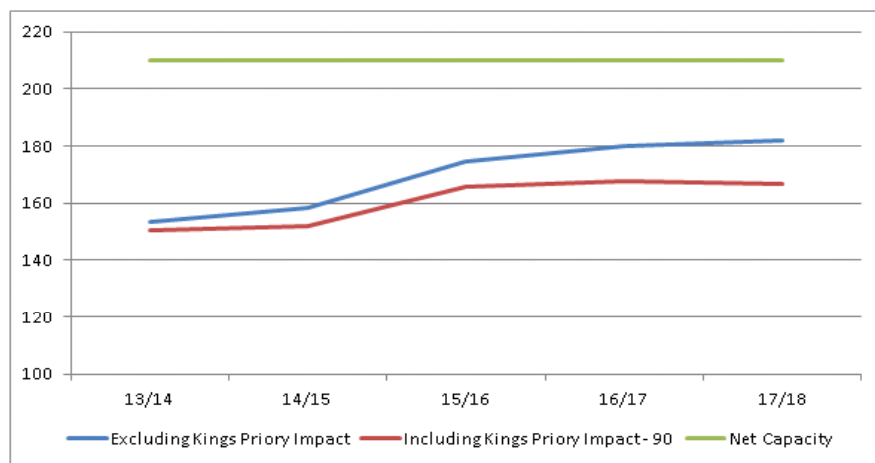


Commentary:

A 1 form entry Primary School.
 St Mary's RC Primary School is projected to see a reduction across the whole school equal to a third of a form of entry.
 If KingsPriory were to admit to 90 in reception St Mary's North Shields could expect to see a 7% decline in pupil number over the next 5 years.
 This reduction is equal to half a form of entry across the school.

School Name: Christ Church (C. Of E.)

	PROJECTIONS				
	13/14	14/15	15/16	16/17	17/18
Excluding Kings Priory Impact	153	158	175	180	182
Including Kings Priory Impact - 83	150	152	166	168	167
Including Kings Priory Impact - 90	150	152	166	168	167
% Variance	-2%	-4%	-5%	-7%	-8%



Commentary:

A 1 form entry Primary School.
 If Kings Priory were to admit to 90 in reception then over 5 years an 8% decline in pupil numbers could be expected.
 This is equivalent to half a form of entry across the school.