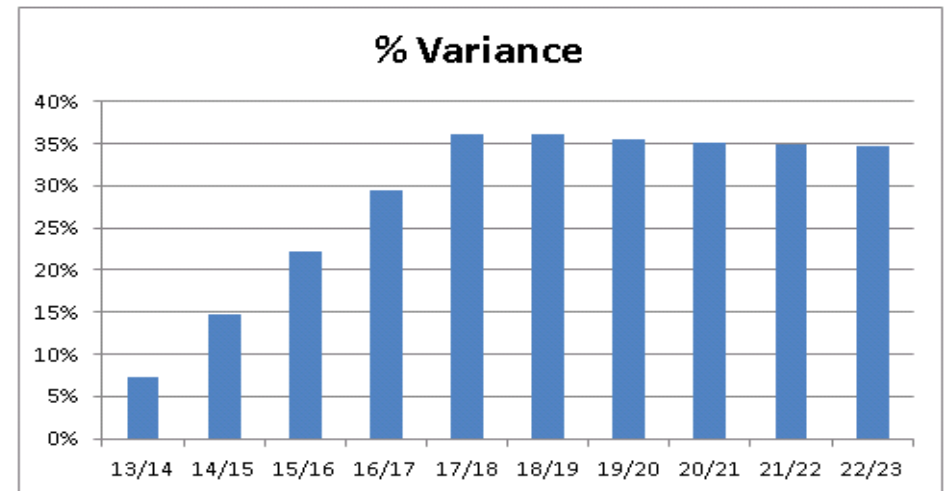
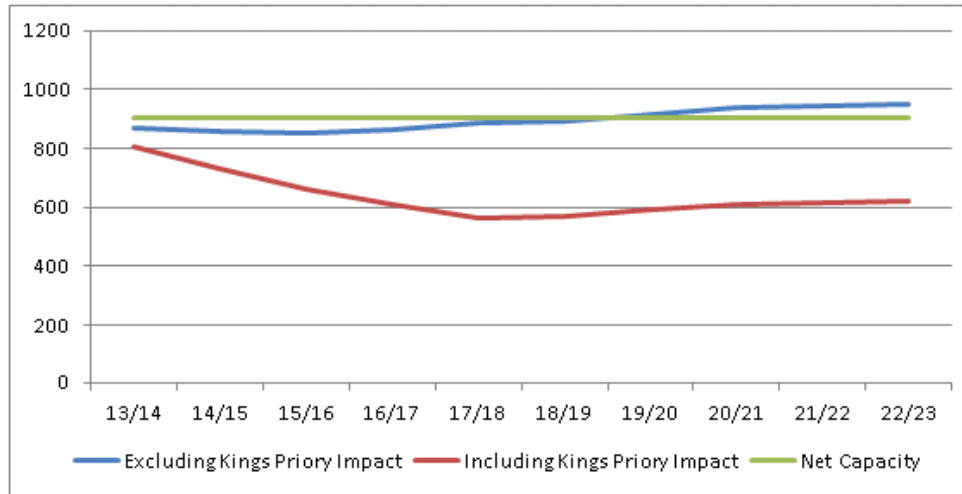


School Name: Marden High School

	PROJECTIONS									
	13/14	14/15	15/16	16/17	17/18	18/19	19/20	20/21	21/22	22/23
Excluding Kings Priory Impact	871	856	850	864	888	895	917	938	947	953
Including Kings Priory Impact	808	730	661	609	567	571	591	609	617	621
% Variance	-7%	-15%	-22%	-30%	-36%	-36%	-36%	-35%	-35%	-35%

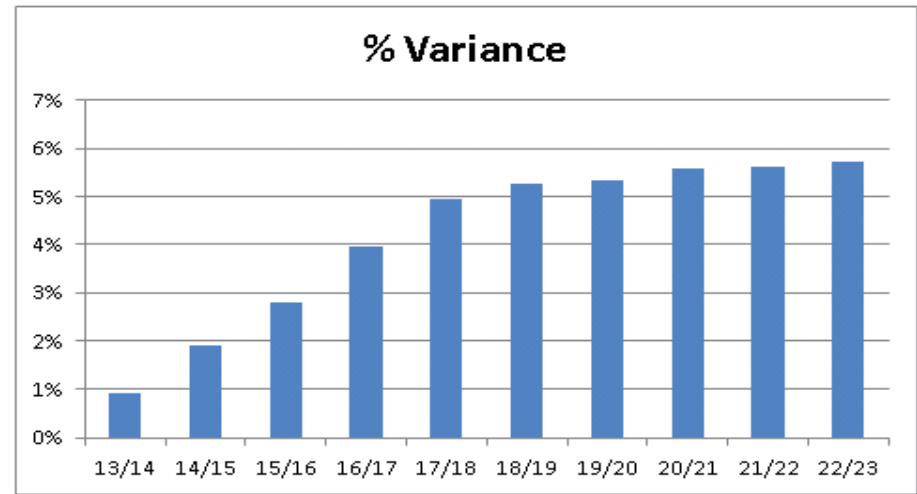
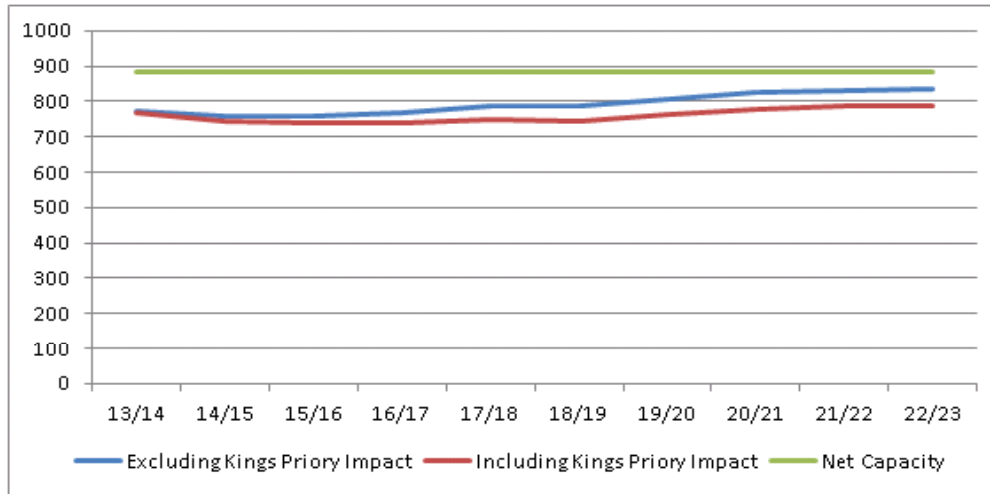


**Commentary:**

Data suggests that historically 87% of Priory Primary pupils have transferred to Marden High School. The impact of the Kings Priory proposals on Marden High School are likely to have a significant detrimental impact on the school. The reduction equates to 30% of the current school population. In addition, Marden High School is likely to be impacted by the 'external' applications to the additional places at Year 7. A potential reduction of 264 pupils over the next 5 years.

School Name: John Spence C H School

	PROJECTIONS									
	13/14	14/15	15/16	16/17	17/18	18/19	19/20	20/21	21/22	22/23
Excluding Kings Priory Impact	775	757	761	769	786	786	806	824	832	837
Including Kings Priory Impact	768	743	740	739	747	745	763	778	785	789
% Variance	-1%	-2%	-3%	-4%	-5%	-5%	-5%	-6%	-6%	-6%

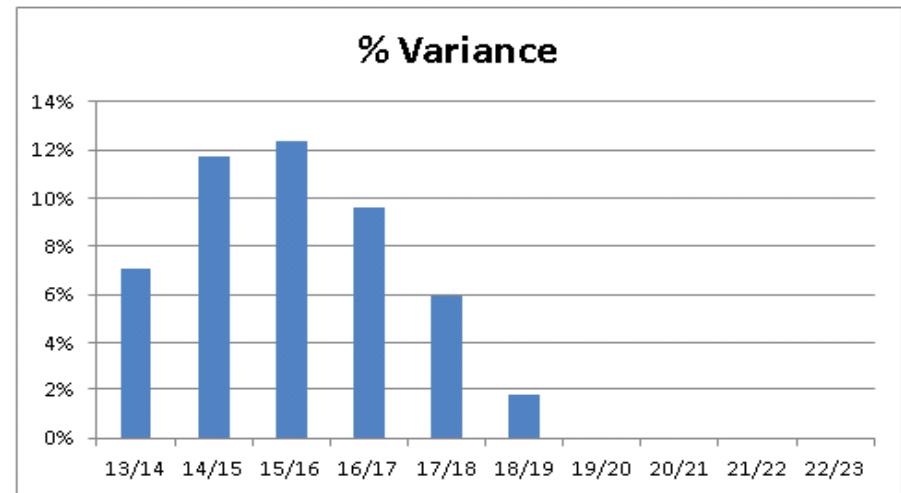
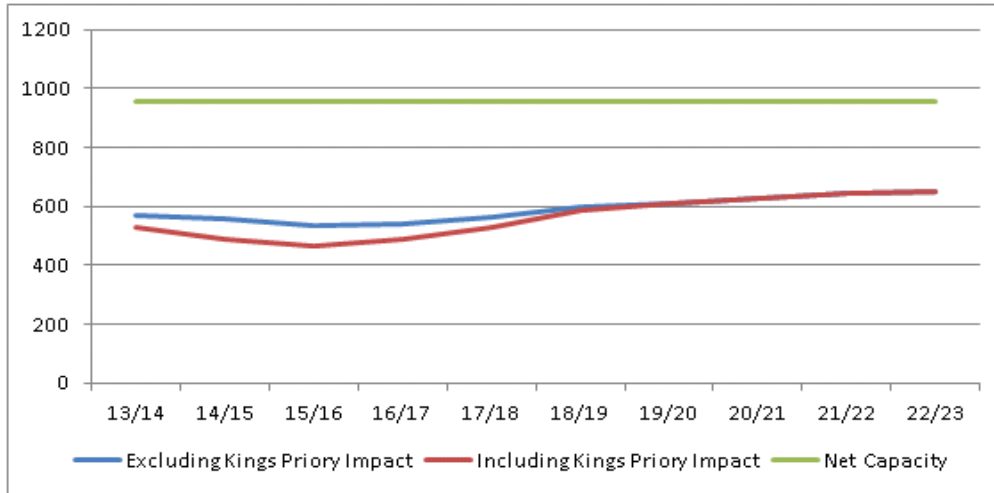


**Commentary:**

It is expected that the Academy proposals would impact on John Spence High School.  
 Data suggests a 6% decline in pupil numbers.  
 This decline will equate to approximately 50 pupils / two classes across the school.  
 John Spence is also likely to be further impacted by the 'external' applications to the additional places ay Year 7.

School Name: Monkseaton Community High

	PROJECTIONS									
	13/14	14/15	15/16	16/17	17/18	18/19	19/20	20/21	21/22	22/23
Excluding Kings Priory Impact	568	556	534	540	563	596	610	625	643	649
Including Kings Priory Impact	528	491	468	488	529	586	610	625	643	649
% Variance	-7%	-12%	-12%	-10%	-6%	-2%	0%	0%	0%	0%



**Commentary:**

A 13 - 18 School.  
 Additional school places will be added into the system at Year 9 for the first two years following the opening of the new Academy.  
 This will have a detrimental impact on the 3 tier system in particular Monkseaton High School.  
 A potential destabilising impact on Year 9 admissions in to the 13 - 18 system.  
 By 2014/15 pupil numbers are projected to fall below 500.