

Safeguarding Children in North Tyneside

Jacqui Old

Council Meeting 24 November 2016



North Tyneside Council

Council and safeguarding

- The value and importance of Council ownership:
 - Importance and scale of the issue
 - Transparency and oversight
 - Opportunity for Council to have a collective and combined approach to the issue
 - Increased understanding of safeguarding
 - Safeguarding is **everybody's business**



Local Authority duties

- **Overarching responsibility for safeguarding and promoting the welfare of all children and young people:**
 - Children's Act 1989 and 2004
 - Children in need, likely to suffer, likely harm
- **Statutory functions:**
 - Director of Children's Services
 - Lead Member for Children's Services
- **However:**
 - Safeguarding is 'legally' everyone's business
 - All who come into contact have a role to play
 - Local Authorities **MUST** facilitate this...



Governance and assurance (1)

Local Safeguarding Children's Board

(legal duty)

- Promote welfare
- Cooperate to protect children
- Agree inter-agency policies and practice
- Monitor overall effectiveness
- Child death overview
- Workforce development



Governance and assurance (2)

7 Pillars of Business Assurance

Effective Practice	Resource Management	Risk Management	Strategy	Quality Assurance	Communication / Culture	Child's Voice
<ul style="list-style-type: none"> • IRO Review of Practice • Procedure Manual – Trix • Signs of Safety • Management Clinics • Team Scorecard • Reflective Practice • Case Supervision • Transformation Board 	<ul style="list-style-type: none"> • Workforce Development Plan and Monitoring • SMT Scorecard • DCS / LMCS • Individual Performance Review (IPR) 	<ul style="list-style-type: none"> • IRO Safe Management of Risk • CYPL Risk Register • Case Supervision • DCS / LMCS • Corporate Assurance Board 	<ul style="list-style-type: none"> • Our North Tyneside Plan • CYP Plan • LSCB Plan • CYPL Service Plan • Individual Performance Review (IPR) • Annual Participation and Involvement Report • LAC Sufficiency Strategy • Corporate Parenting Board 	<ul style="list-style-type: none"> • IRO Annual Report • IRO Escalation Process • Case File Audits • Learning Forums • Case management • Children, Young People and Learning Overview and Scrutiny Sub Committee • Regulation 44 Visit 	<ul style="list-style-type: none"> • Leadership Forum • Learning Forums • Teamwork • Staff Conferences 	<ul style="list-style-type: none"> • Life Story Work • Regional Children in care Council • NT Children in Care Council • IRO Participation in Planning • Participation • Advocacy • Engagement • Individual Care Plan • Signs of Safety

UNDERSTANDING

IMPROVEMENT

ASSURANCE

How we respond

Prevention

- Universal
- Locality working
- Work with schools
- Whole family support

Front Door

- Support to partners
- MASH
- Advice and information
- Threshold tool
- Early help

Social Work

- Assessment
- Protection plans
- Legal powers and duties
- Edge of care
- Looked After Children

Activity / demand

	2013/14	2014/15	2015/16	2016/17 (to End August)
Contacts about safeguarding	7,855	7,832	7,200	2,982
Child in Need (s17)	2,257	1,841	1,665	707
Child Protection (S47)	354	411	393	206
Child Protection Plans at Point in Time	157	169	179	189

Reason for child protection (in order of prevalence):

- Neglect
- Emotional abuse
- Physical Abuse
- Sexual abuse

Challenges



Pressures

- Embedding early help
 - Partners understanding their role
 - NHS funding for shared care
 - Lack of internal foster carers
 - Local and regional market – supply and demand
 - Recruitment and retention
- Rising numbers of LAC – 12.2% since 2011
 - SEND high threshold / parent expectations
 - Unaccompanied Asylum Seeker Children
 - Child protection - 9% increase from previous year
 - Sexual exploitation
 - Domestic violence
 - Substance misuse
 - Court proceedings



Increasing Demand

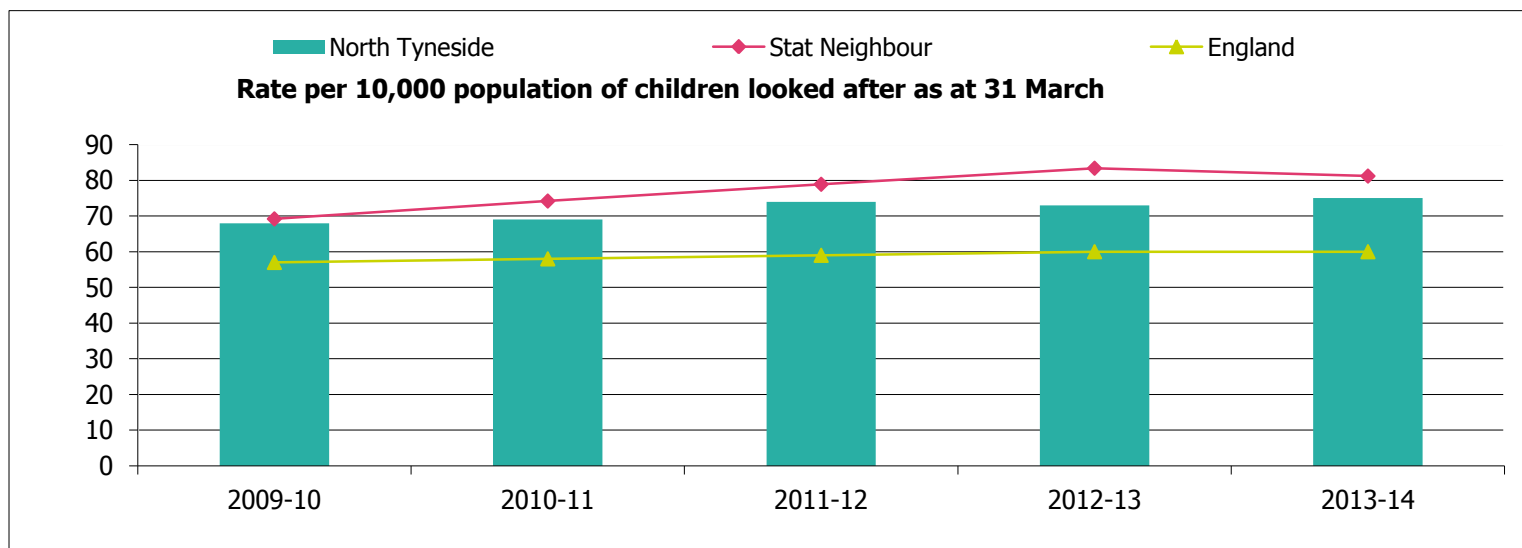
Areas of development

- Confused pathways for early intervention for partners, resulting in demand inappropriately being routed through a social care assessment process
- 55% of assessments did not result in a Child in Need, Child Protection, or Looked After plan. This is the highest proportion in England, and more than double the England average (23%).
- Early intervention being seen as a Council activity / social care activity



Areas of development

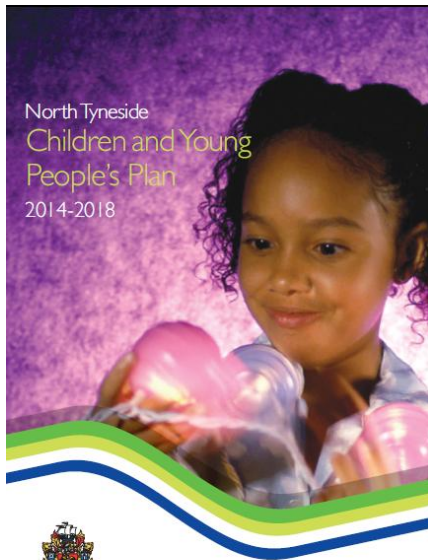
- A total of 478 children and young people became looked after (BLA) in North Tyneside between 17th April 2012 and 19th June 2015. Current number of LAC 322 (5.10.15)
- In the financial year 2012-13 there was a total LAC population of 295 at a rate of 73 per 10000. This increased to 305 at a rate of 75 per 10000 for 2013-14.



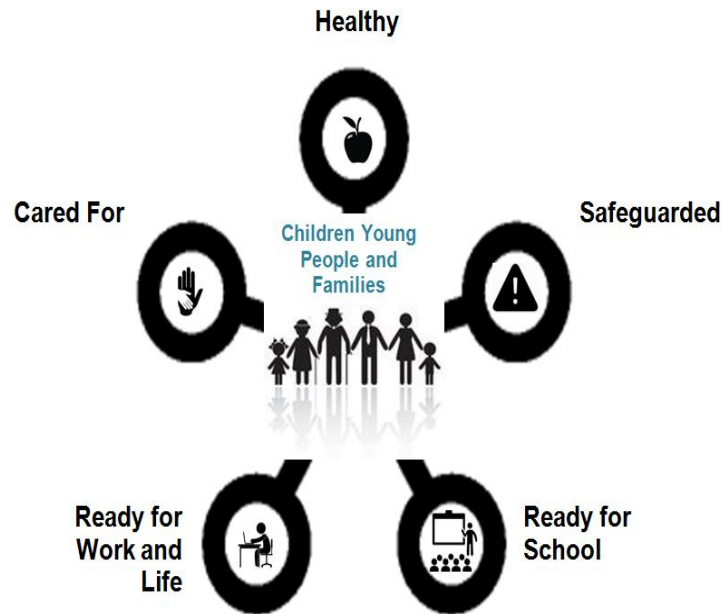
North Tyneside *LAC population is significantly higher than the England average* and whilst it is lower than statistical neighbours they have seen rises in LAC numbers over the past three years with an increased rate of LAC entry in the first half of 2015

Work to date

Creating a Brighter Future, Children and Young People's Plan, Ready for/Cared for Entitlements, Prevention and Early Help Strategy



www.northtyneside.gov.uk



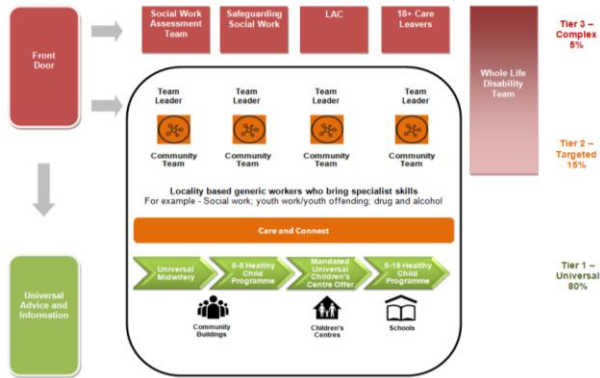
North Tyneside **Prevention & Early Help** Strategy

2016

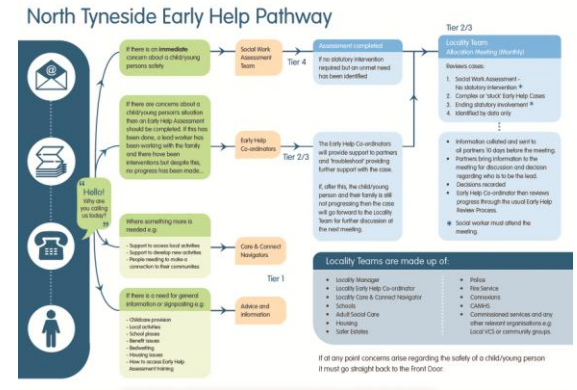


What have we changed?

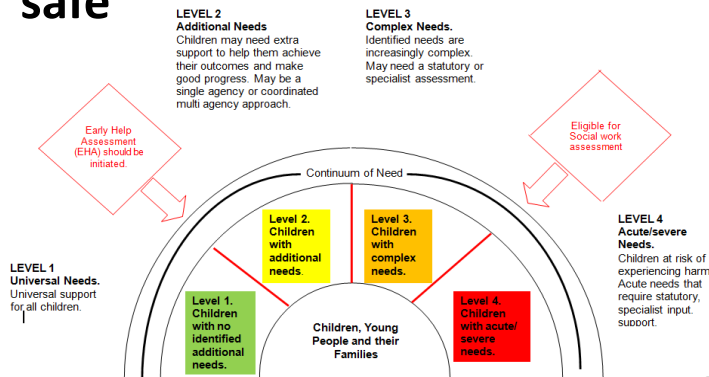
1. Designed a new Early Help system



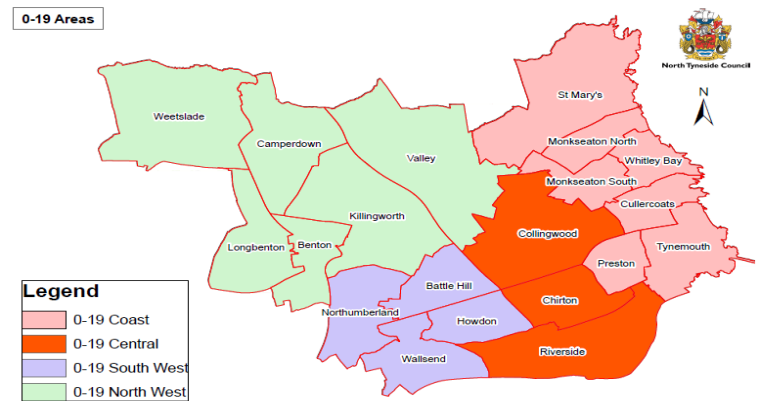
2. Established Early Help pathways



3. Ensured we can keep children safe



4. Established Locality Teams



Finally:

Keeping it simple –3 key pledges

Pledge 1: we intervene early with evidence based, family focussed services.

Pledge 2: we work in partnership to keep children in school

Pledge 3: we keep them safe at home and connected to their local communities

