

NORTH TYNESIDE LOCAL PLAN POLICIES MAP 2017 DRAFT

Strategic Sites - Policies S4.4a/b/c

Killingworth Moor (Sites 22 to 26)
Murton (Sites 35 to 41)

- Strategic Site Boundary
- Indicative Development Zone
- Indicative Mixed-Use Zone
- Potential Location for New School
- Potential Location for Employment Development
- Indicative Green Amenity Space and Buffer Zone
- Indicative Wildlife Corridor
- Indicative Access Point
- Indicative Principal Highway Routes and Junctions
- Indicative Secondary Highway Routes and Junctions
- Indicative Principal Pedestrian, Horsing, Cycle Routes and Community Connections
- Potential New Metro Station

Legend

North Tyneside Boundary

Strategic Policies

- Local Plan Strategic Policy Area
- Green Belt
- Safeguarded Land
- Local Green Space

Local Plan Site Allocations

- Residential
- Mixed-Use
- Employment Land
- Available Employment Land
- Reserved Employment Land
- Retail

Economy

- River Tyne North Bank
- Enterprise Zone
- A19 Economic Corridor

Retail and Town Centres

- Town Centre Boundary
- District and Local Centre Boundary
- Town Centres - Primary Shopping Areas
- Primary Shopping Frontage
- Secondary Shopping Frontage
- Hot Food Takeaway Schools Buffer

Infrastructure

- Metro Station
- Shields Ferry
- International Ferry Terminal (Port of Tyne)
- Transport Safeguard Route
- Cycle Routes
- Tyne Pedestrian and Cycle Tunnel
- Transport Improvement Schemes and Junctions
- Waste Management Facility
- Howdon Wharf

The Natural Environment

- Open Space
- Special Protection Area (SPA) and Ramsar Site
- Site of Special Scientific Interest (SSSI)
- Local Wildlife Site (LWS)
- Site of Local Conservation Importance (SLCI)
- Wildlife Corridor
- Coastal Change Management Area (CCMA)
- Mineral Safeguarding Area - Limestone
- Mineral Safeguarding Area - Sand and Gravel
- Energy Mineral Safeguarding Area coincides with Borough Boundary
- Newcastle International Airport Noise Level Contour (dB) - L den (2011)

Housing

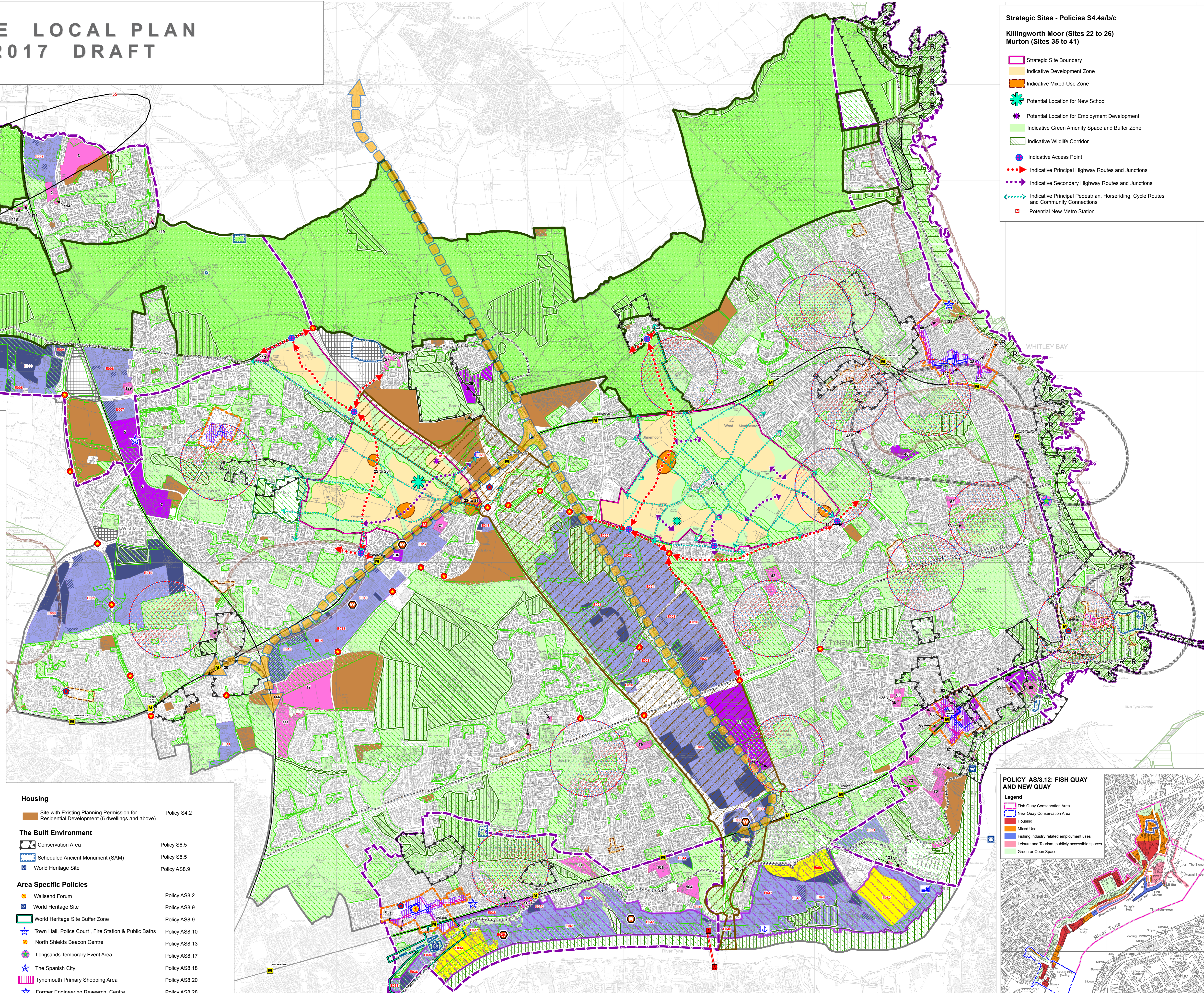
- Site with Existing Planning Permission for Residential Development (5 dwellings and above) Policy S4.2

The Built Environment

- Conservation Area Policy S6.5
- Scheduled Ancient Monument (SAM) Policy S6.5
- World Heritage Site Policy AS8.9

Area Specific Policies

- Wallsend Forum Policy AS8.2
- World Heritage Site Policy AS8.9
- World Heritage Site Buffer Zone Policy AS8.9
- Town Hall, Police Court, Fire Station & Public Baths Policy AS8.10
- North Shields Beacon Centre Policy AS8.13
- Longsands Temporary Event Area Policy AS8.17
- The Spanish City Policy AS8.18
- Tynemouth Primary Shopping Area Policy AS8.20
- Former Engineering Research Centre Policy AS8.28



POLICY AS/8.12: FISH QUAY AND NEW QUAY

Legend

- Fish Quay Conservation Area
- New Quay Conservation Area
- Housing
- Mixed Use
- Fishing industry related employment uses
- Leisure and Tourism, publicly accessible spaces
- Green or Open Space

FISH QUAY NP SPD scale 1:8000