

TYNESIDE CATCHMENT & HOWDON STW

HOWDON STW



TYNESIDE CATCHMENT INTERCEPTOR MAP (145sq MILES)



HOWDON STW STATISTICS

- Largest STW on the east coast between Edinburgh and Thames
- Treats waste from equivalent of 1.1 million people
- 45 miles (76km) of interceptor
- DWF = 229,000m³/d – 2,600l/sec
- Treats up to 12.12m³ of sewage per second
- A number of leading edge processes installed
- Manned 24 hours to ensure safe continuous operation

HOWDON AAD



2012

GAS TO GRID



2014

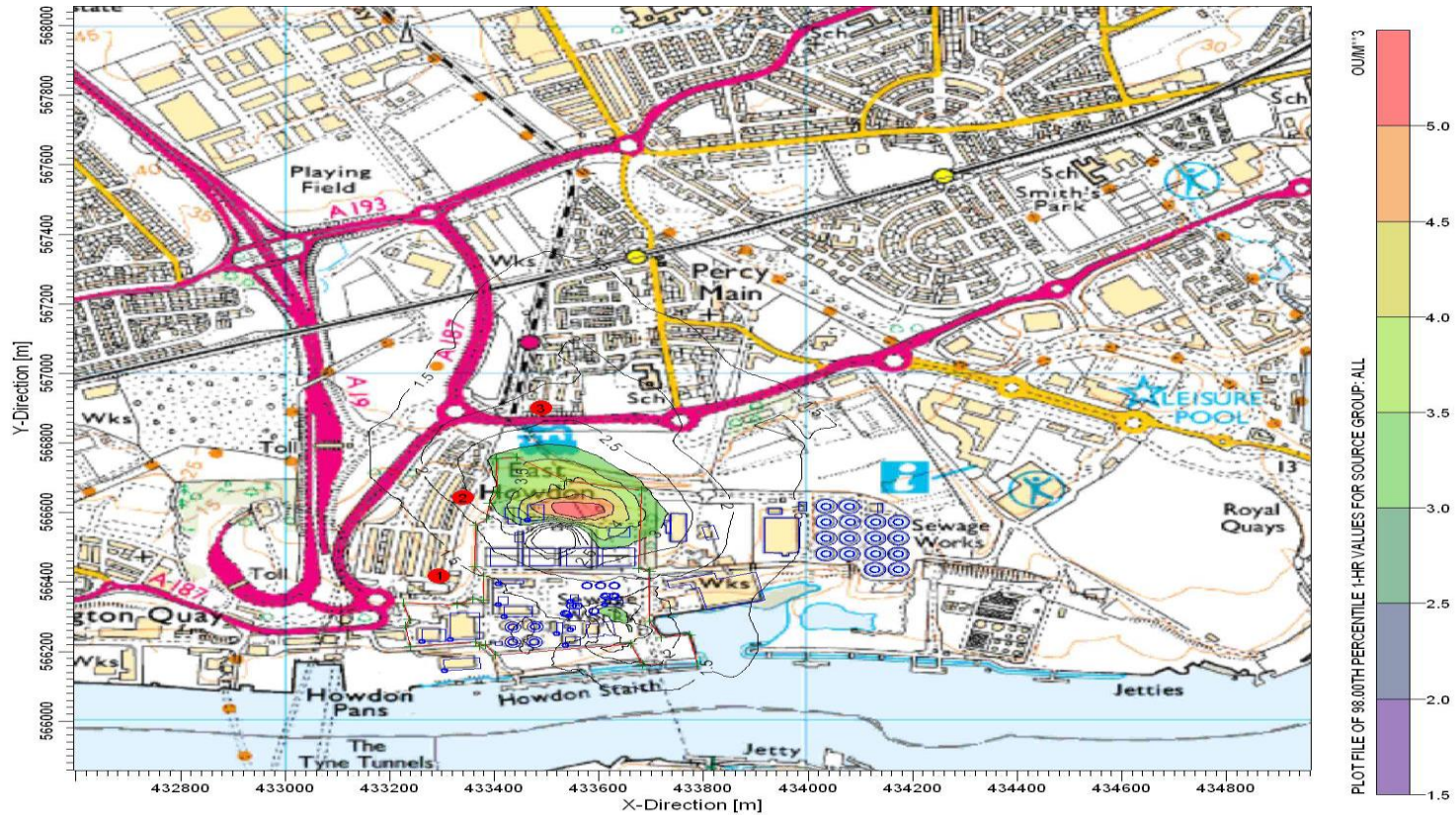
HOWDON STW

ODOUR CONTROL



Odour Control across all parts of the plant

ODOUR MODEL



DISCUSSION & QUESTIONS

