

Fire as a 'Health Asset'

John Pratt
Area Manager
Service Delivery

**Tyne and Wear Fire
and Rescue Service**

Creating the Safest Community

www.twfire.gov.uk



Our service – priorities and core activities



Response



Resilience

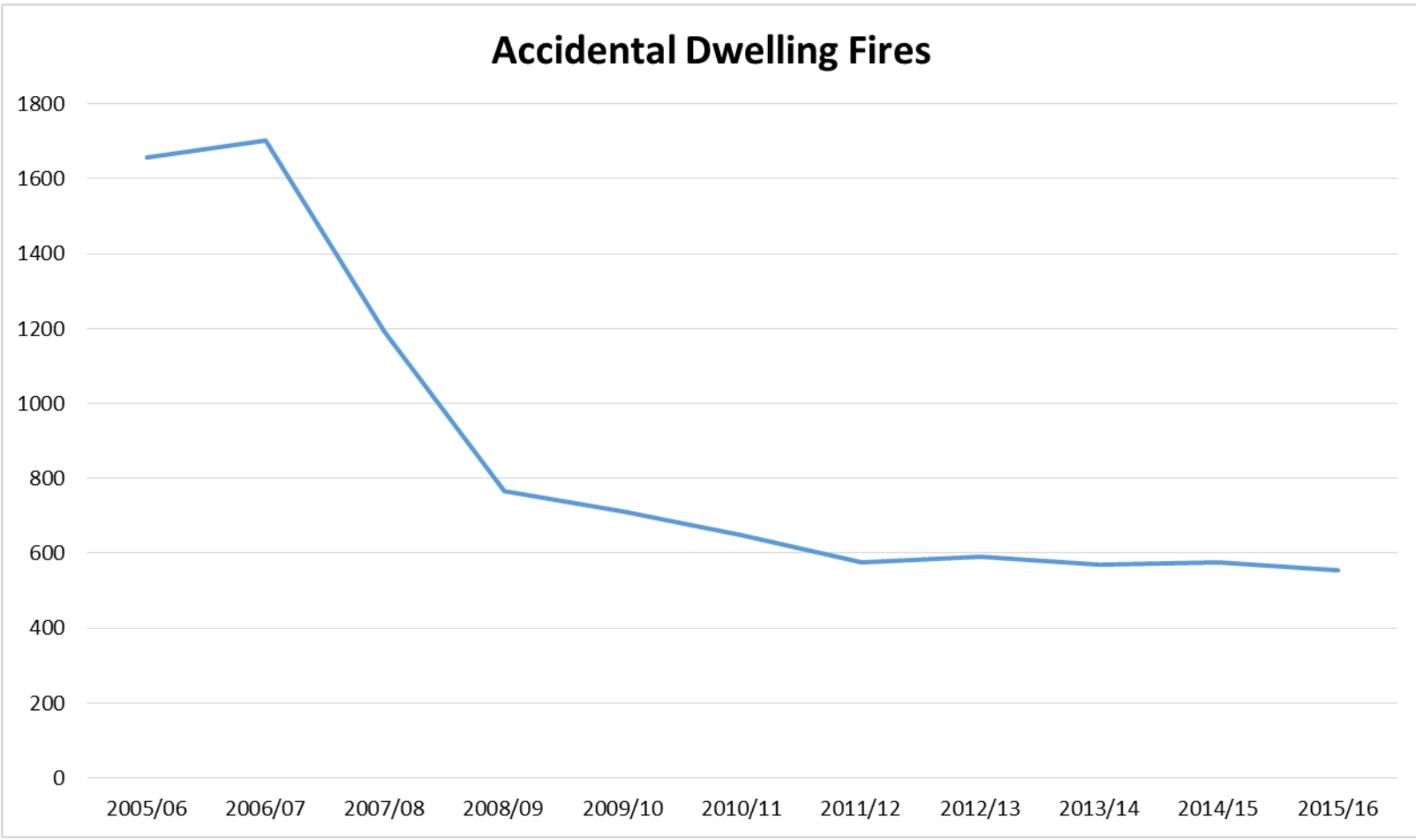


Prevention



Protection

Performance



Tyne and Wear Community Risk Profile

2015



**Tyne and Wear Fire
and Rescue Service**

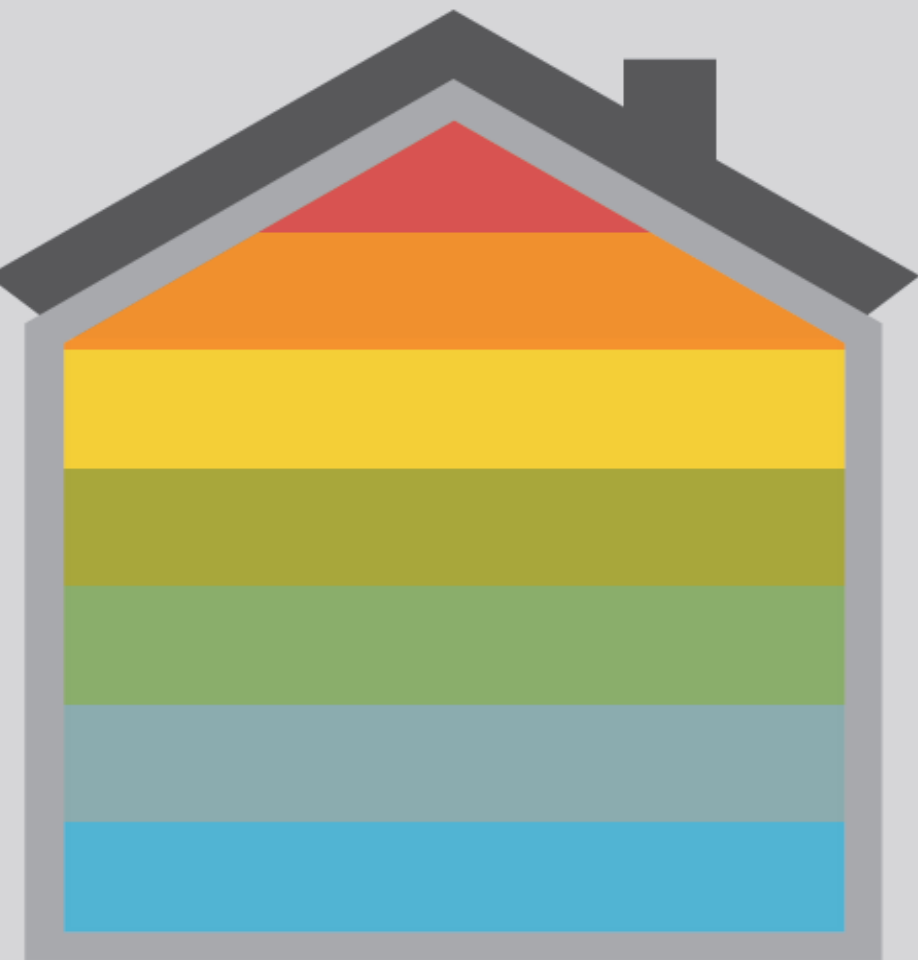
Creating the Safest Community

www.twfire.gov.uk





Fire death risk factors

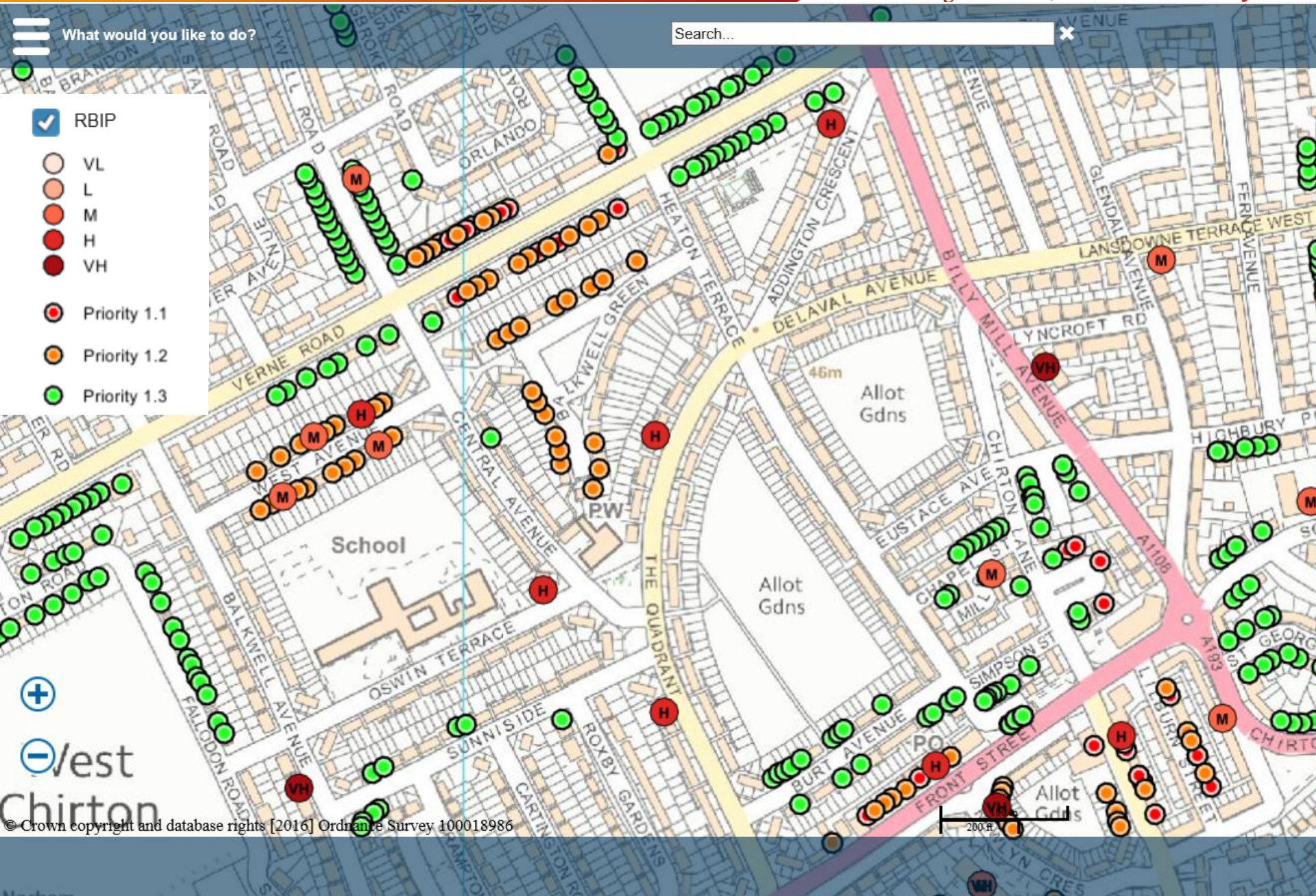


- Mental health
- Poor housekeeping
- Alcohol
- Smoking
- Drugs (prescription or illegal)
- Limited mobility
- Living alone

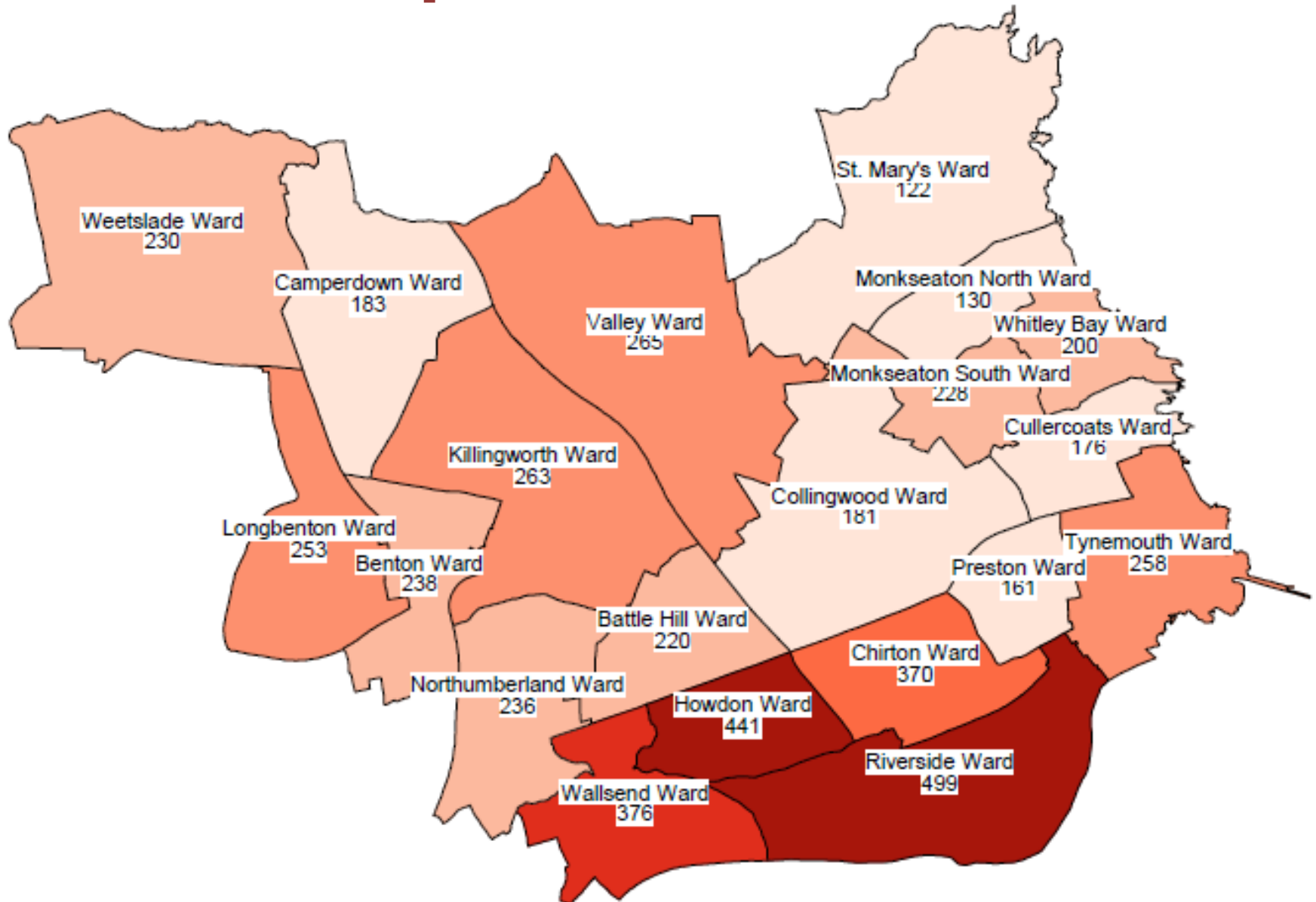
What would you like to do?

Search...

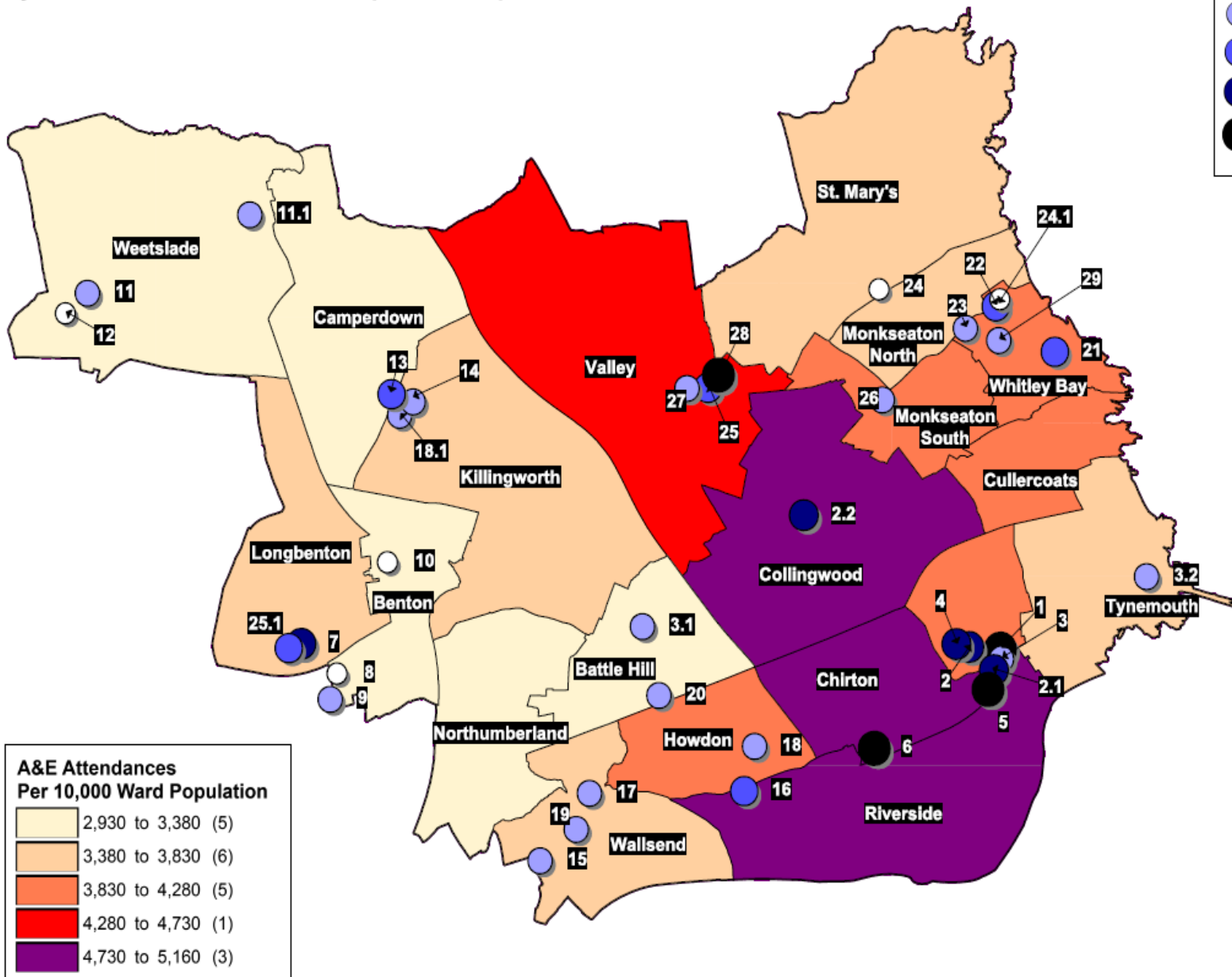
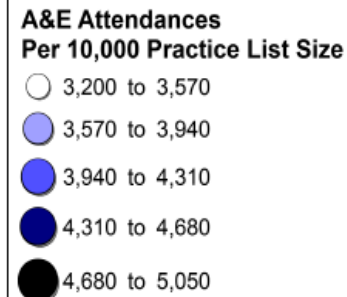
- RBIP
- VL
- L
- M
- H
- VH
- Priority 1.1
- Priority 1.2
- Priority 1.3



HSCs completed 2015/16



North Tyneside Resident Responsible Patients
A&E Attendances at All Sites (exc Battle Hill WIC) & Department Types
by Ward & Practice Per 10,000 Population - April 2015 to March 2016



- 1 A87002-Spring Terrace Health Centre
- 2 A87004-Collingwood Health Group
- 2.1 A87004-Nelson Health Centre
- 2.2 A87004-New York Surgery
- 3 A87009-The Priory Medical Group
- 3.1 A87009-The Medical Centre
- 3.2 A87009-Tynemouth Medical Centre
- 4 A87015-Appleby Surgery
- 5 A87019-Nelson Medical Group
- 6 A87030-Redburn Park Medical Centre
- 7 A86005-West Farm Surgery
- 8 A86016-Lane End Surgery
- 9 A86041-Swarland Avenue Surgery
- 10 A87007-Forest Hall Medical Group
- 11 A87012-Wideopen Medical Centre
- 11.1 A87012-The Surgery
- 12 A87017-Woodlands Park Health Centre
- 12.1 A87017-The Clinic
- 13 A87612-Wellspring Medical Practice
- 14 A87615-Mallard Medical Practice
- 15 A87003-Portugal Place Health Centre
- 16 A87013-Bewicke Medical Centre
- 17 A87016-The Village Green Surgery
- 18 A87027-Garden Park Surgery
- 18.1 A87027-White Swan Surgery
- 19 A87029-Park Road Medical Practice
- 20 Y02710-Battle Hill Health Centre
- 21 A87005-Whitley Bay Health Centre
- 22 A87008-49 Marine Avenue Surgery
- 23 A87008-Marine Avenue Medical Centre
- 24 A87011-Beaumont Park Medical Group
- 24.1 A87011-45A Marine Avenue
- 25 A87014-Earsdon Park Medical Practice
- 25.1 A87014-Friarsleigh Medical Practice
- 26 A87020-Monkseaton Medical Centre
- 27 A87022-Northumberland Park MG
- 28 A87023-Shiremoor Medical Group
- 29 A87600-Park Parade Surgery

Proactive Work with Carecall

- 19th June 2014
- Fire at Sandown Gardens
- 'Case Study'
- Joint working with Carecall



TWFRS Prevention Activities



School Education



Phoenix



TWFRS Prevention Activities

Prince's Trust & Ignite



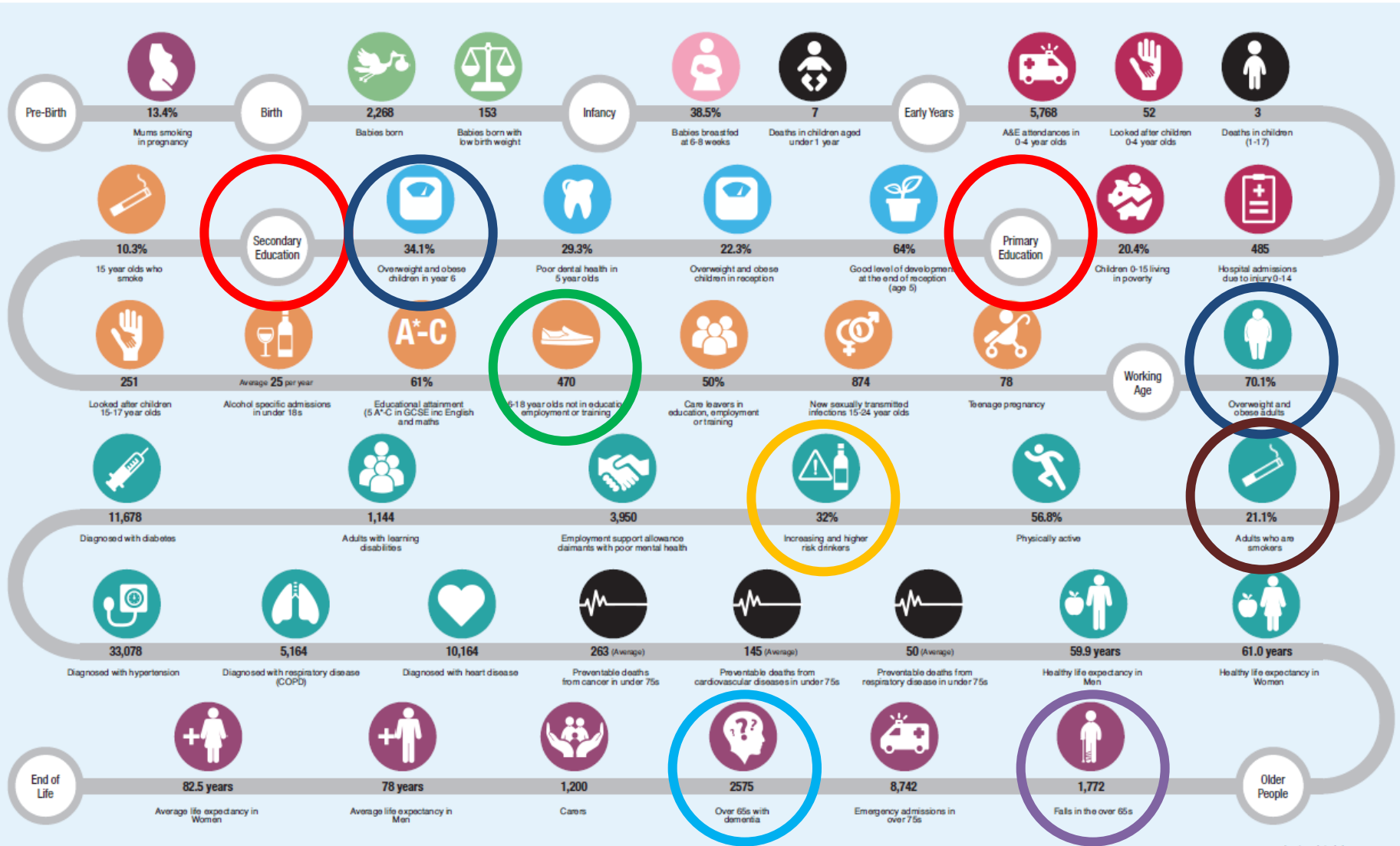
TWFRS Prevention Activities

Safe and Well Visits





JSNA Overview of Health and Wellbeing in North Tyneside



Current Joint Working Examples

- North Tyneside Strategic Partnership
- Safer North Tyneside (eg Alcohol)
- Safeguarding
- Carecall
- Chirton & Riverside Initiative
- Smoke Free Alliance
- Crucial Crew Event
- Healthy Homes Scheme - referral

Future Opportunities

- Prevention focussed activities
- Working together for joint benefit
 - JSNA
 - Data sharing to improve targeting/risk profiling
 - Two-way referral/signposting (Make every contact count)
 - Deliver shared priorities
- Supporting Health and Wellbeing agenda in North Tyneside

Any Questions?

Further reading:

[Beyond Fighting Fires](#)

[Beyond Fighting Fires 2](#)

[Working Together](#)

[TWFRS Community Risk Profile](#)

**Tyne and Wear Fire
and Rescue Service**

Creating the Safest Community

www.twfire.gov.uk

