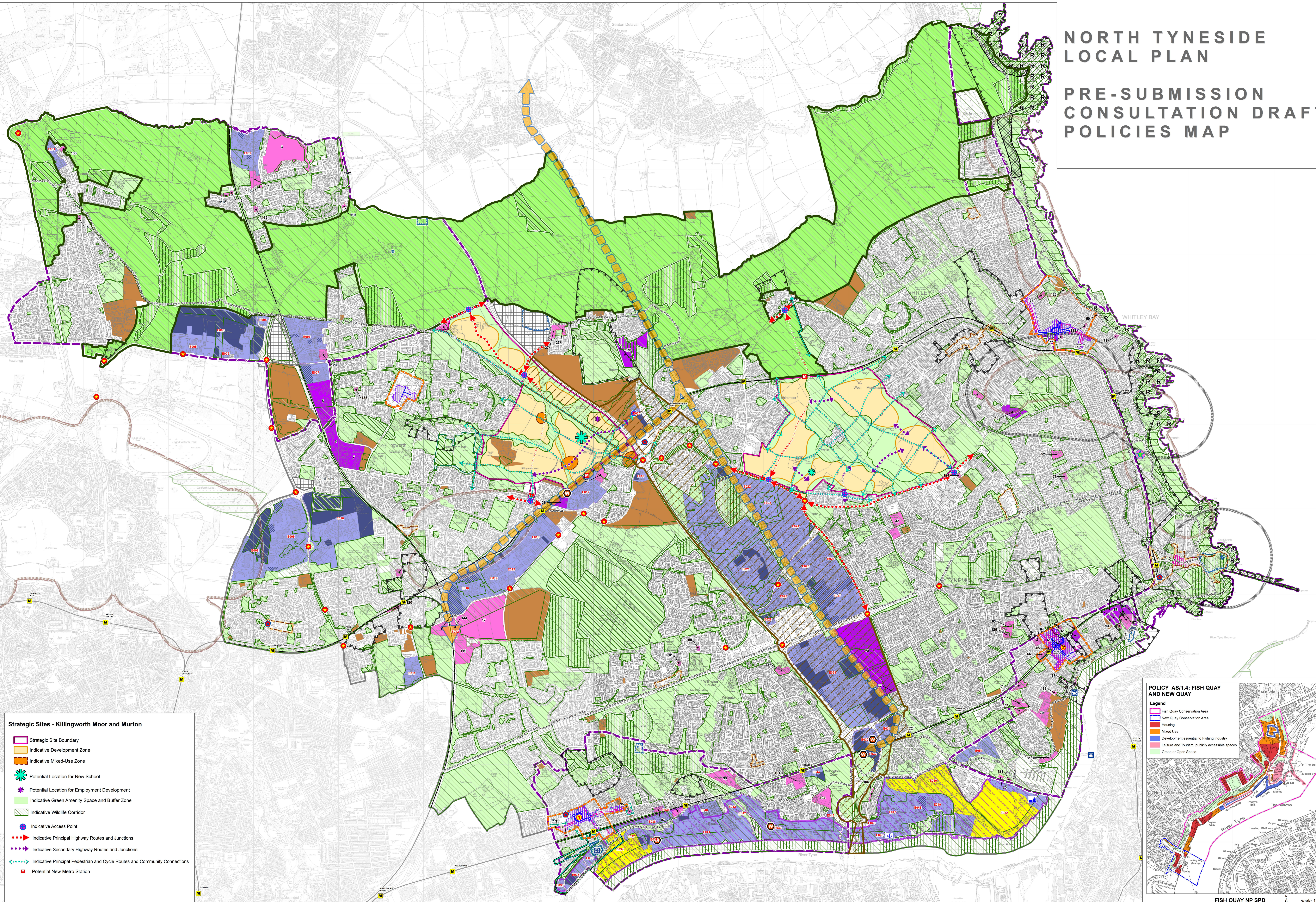


NORTH TYNESIDE LOCAL PLAN

PRE-SUBMISSION CONSULTATION DRAFT POLICIES MAP

- Legend**
- North Tyneside Boundary
- Strategic Policies**
- Local Plan Strategic Policy Area
 - Green Belt
 - Safeguarded Land
 - Local Green Space
- Local Plan Site Allocations**
- Residential
 - Mixed-Use
 - Employment Land
 - Available Employment Land
 - Reserved Employment Land
 - Local Plan Allocated Site - Retail
- Economy**
- River Tyne North Bank
 - Enterprise Zone
 - A19 Economic Corridor
- Retail and Town Centres**
- Town Centre Boundary
 - District and Local Centre Boundary
 - Town Centres - Primary Shopping Areas
 - Primary Shopping Frontage
 - Secondary Shopping Frontage
- Housing**
- Site with Existing Planning Permission for Residential Development (5 dwellings and above as at September 2015)
- The Natural Environment**
- Open Space
 - Special Protection Area (SPA) and Ramsar Site
 - Site of Special Scientific Interest (SSSI)
 - Local Wildlife Site (LWS)
 - Site of Local Conservation Importance (SLCI)
 - Wildlife Corridor
 - Coastal Change Management Area (CCMA)
 - Mineral Safeguarding Area - Limestone
 - Mineral Safeguarding Area - Sand and Gravel
- The Built Environment**
- Conservation Area
 - Scheduled Ancient Monument (SAM)
 - World Heritage Site
- Infrastructure**
- Metro Station
 - Shields Ferry
 - International Ferry Terminal (Port of Tyne)
 - Transport Safeguard Route
 - Cycle Routes
 - Transport Improvement Schemes and Junctions
 - Waste Management Facility
 - Howdon Wharf
- Area Specific Policies**
- Wallsend Forum
 - Wallsend Conservation Area - Proposed Boundary
 - World Heritage Site
 - World Heritage Site Buffer Zone
 - Town Hall, Police Court, Fire Station and Public Baths
 - North Shields Beacon Centre
 - Longsands Temporary Event Area
 - The Spanish City
 - Tynemouth Primary Shopping Area
 - Former Engineering Research Centre



- Strategic Sites - Killingworth Moor and Murton**
- Strategic Site Boundary
 - Indicative Development Zone
 - Indicative Mixed-Use Zone
 - Potential Location for New School
 - Potential Location for Employment Development
 - Indicative Green Amenity Space and Buffer Zone
 - Indicative Wildlife Corridor
 - Indicative Access Point
 - Indicative Principal Highway Routes and Junctions
 - Indicative Secondary Highway Routes and Junctions
 - Indicative Principal Pedestrian and Cycle Routes and Community Connections
 - Potential New Metro Station

